



“ELIS” Scientific - productive enterprise

**An Introduction to Electroacupuncture Diagnosis,
Vegetative Resonance Test (VRT),
Exogenous and Endogenous Bioresonance Therapy (BRT).**

Authors of methodological instructions:

S. P. Konopliev

T.N. Ghannam

Translation: A.G. Athanasiou

“.....ELIS”

Copyright © 2013 Deta-Elis Hellas

The reproduction, transmission, republication, circulation of the content of this document or of a part of it without prior written permission of the editor is prohibited.

INTRODUCTION

Due to its being a complex biological system, the human organism is a source of weak electromagnetic vibrations of a very wide range extending from low to ultra-high frequencies. It has been known that each atom and molecule constantly radiate extremely weak signals of a definite frequency and spatio-temporal arrangement. All electromagnetic vibrations found in nature are carriers of information and energy. The electromagnetic signals of the human organism are one of the components of homeostasis and perform energy-informational, communicative and regulatory functions in all levels of its organization: the sub-cell level, the cell level, the tissue level, the organic level and the system level.

Electromagnetic phenomena have a substantial value in the organization, articulation and function of living systems, not only in states of health but in cases of disease as well. A constant exchange of information through electromagnetic waves takes place both inside the cell as well as among different cells. Functional disorders occur to an organism when the delicate control processes are changed due to intervention of incompatible (pathological) vibrations - harmful elements for the organism. Subsequently, these disorders, in case the immune system of the organism is not able to restore them appropriately, cause the physical-bodily appearance of the disease.

Energy-informational medicine is the research area that investigates the potentials in diagnosis and treatment out of the use of methods and concepts of elementary Physics and of Physics of Biological Systems. Historically, energy-informational medicine emerged as a result of interaction among three methodological approaches:

- **Electroacupuncture examination**, or, in other words, the method of defining a patient's situation with the aid of electroacupuncture measurement-recordings. Characteristic examples are: the *Vegetative Resonance Test* or *VRT*, *the R. Voll method*, *the Nakatani ("Ryodoraku") method*,
- **Bioresonance and multiple resonance therapy**, or the method of treating the patient through the exclusive use of his/her own or of weak external electromagnetic vibrations.

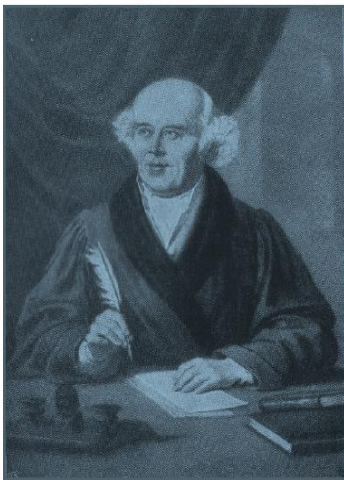
- **Homeopathy** and the method of treatment with the aid of homeopathic products, nosodes, organic products etc.

What is common for the three aforementioned approaches is the fact that the human organism is treated as a system that receives, stores and processes information that it uses in order to preserve its vital functions (homeostasis).

HOMEOPATHY

Basic concepts of homeopathy

Homeopathy is the division of the science of medicine that proposes the use of products of high dilution that cause symptoms analogous to those of the disease. The idea of therapy in homeopathy is effected on the basis of the principle “*similars cure similars*” (*simila similibus curantur*), in contrast with the principle of allopathy, “*opposites cure opposites*” (*contraria contribus curantur*). The homeopathic method (approach) of therapy relies on



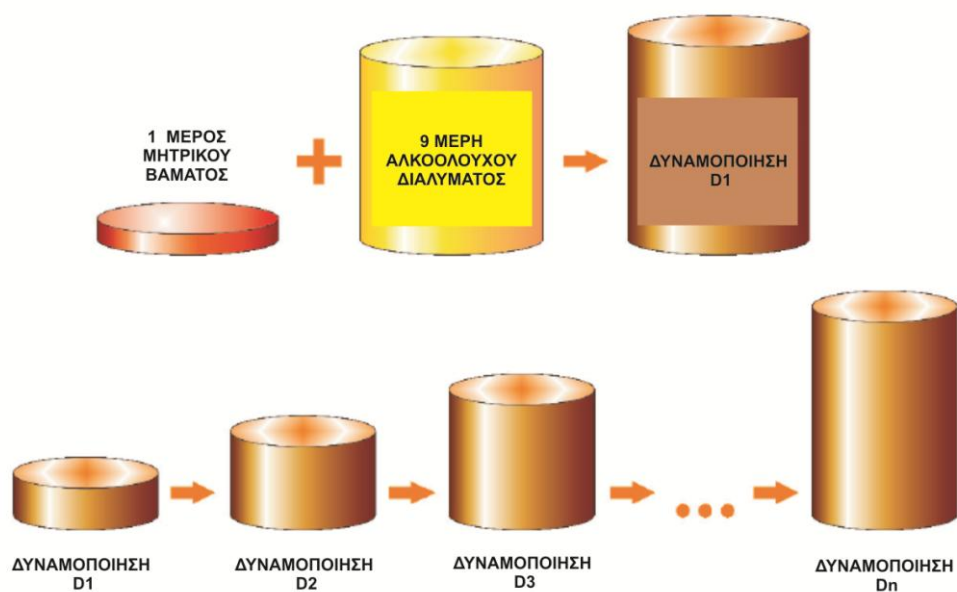
the basic principle of similars: i.e. the correspondence of the symptoms of the disease with the symptoms caused by the reception of the pharmaceutical product. Tracing of the symptoms caused by the homeopathic means is conducted through testing (proving-examination) of different dilutions of the product to healthy people. By having for each pharmaceutical product its “portrait” or the range of its symptoms, the physician will be able to compare it with the patient’s range of symptoms and according to the presence of similarity to define the therapeutic treatment. This implies that a homeopathic product is able to halt the disease symptoms that it causes to a healthy person to similar symptoms of an actual disease.

Homeopathic products are prepared according to a definite process: initially, the primary element extracted from the therapeutic means, which can be any kind of substance of plant, animal or mineral origin, is prepared. The (therapeutic) is dissolved into alcohol (90%) or is rubbed (pulverized) for several hours with lactose or quartz sand, according to its natural properties.

Subsequently, the extract that we have taken gradually is diluted at the alcohol according to a specified ratio. In the German terminology of homeopathy, the procedure of preparation of homeopathic pharmaceutical items, which, aside from its dissolution, includes its constant vibration, is called **potentioning** (i.e. we receive the potentions), whereas in Russia the terms **division or dilution** are used. Potentioning of homeopathic pharmaceutical means can be performed with decimal, percentile or even subdivisions of the thousand. Homeopathic means are potentioned according to two basic scales: the percentile dilution scale, which is symbolized with the letter C, and the decimal dilution D-scale. The numbers in the name of the means that follow the Latin letters symbolize the grade of dilution. In the percentile dilution “C” the concentration of the means in each case is decreased by 100 times, in the decimal “D” it is decreased by 10 times. We stress that, each phase is accompanied by an intense **shock**.

For the preparation of percentile potentionings, 1 gr of pharmaceutical element is dissolved in 99 parts of solvent (usually a solution water-alcohol), having as a result the reception of the first potentioning (100^{-1}), symbolized with C1 or 1C etc. Two methods for the preparation of “percentile” potentionings are applied: the Hahnemann method and the Korsakov method. To distinguish the one from the other, the Latin letters H and K are added to the symbolism of the dilutions ($1CH=1CK=1/100$, $3CH=3CK=1/1000000$). In addition, there are also the LM potentionings, which are prepared out of the 3C dilution (which is taken as a unit) to 50000 and are symbolized with the Latin letters LM ($1LM=1/50000$, $2LM=1/500000000$ etc).

For the preparation of decimal potentionings, 1 part (or gr) of pharmaceutical element is dissolved in 9 parts of solvent, having as a result the reception of the first decimal potentioning (10^{-1}), which in Germany is symbolized with D1, whereas in Russia with Arabian and Latin numbers 1X. From the solution that emerged we take 1 part of the element and dissolve it into 9 parts of solvent, and respectively we receive the second decimal potentioning (10^{-2}), i.e. D2 or 2X. After each dilution, the solution which emerges vibrates 10 times. This is called the **potentioning of the solution**.



The process is multiply repeated, which bears the result of the production of a series of decimal potentionings from D1 to D1000 (1X-1000X) and above.

S. Hahnemann and those who followed him believed that during the process of vibration a latent energy of the pharmaceutical means is released, the so-called “**vital force**”. From the point of view of contemporary science, potentiation is a sequence of *physicochemical interactions* of the primary material with the solvent, which results in our receiving a pharmaceutical product of high energy. During the process of potentiation (i.e. the multiple vibration of the tubes with the solution after each dilution), intermolecular and intramolecular unions of the initial matter (original material) are gradually broken. At the same time, new with the participation of atoms and molecules of the solvent are created. It is known that the different kinds of chemical unions and of other forms of interaction that occur among atoms and molecules (bipolar, van der Waals etc.) are determined in the last instance by the interactions between the positive and the negative charges or of the charged parts of the molecules. These interactions have a polar character, whereas their fields (electric, electrostatic, electromagnetic), as well as their quanta (electrons, photons) are characterised by properties (functions). All waves and all quanta have both energy and informational characteristics at the same time (frequency, wave length and amplitude etc.). It is also known that the breach of the unions, as is also the case with their creation, takes place with the emission and/or the absorption of energy. Hence, since this energy also has

wave properties, these processes are accompanied with the reception and transmission of information.

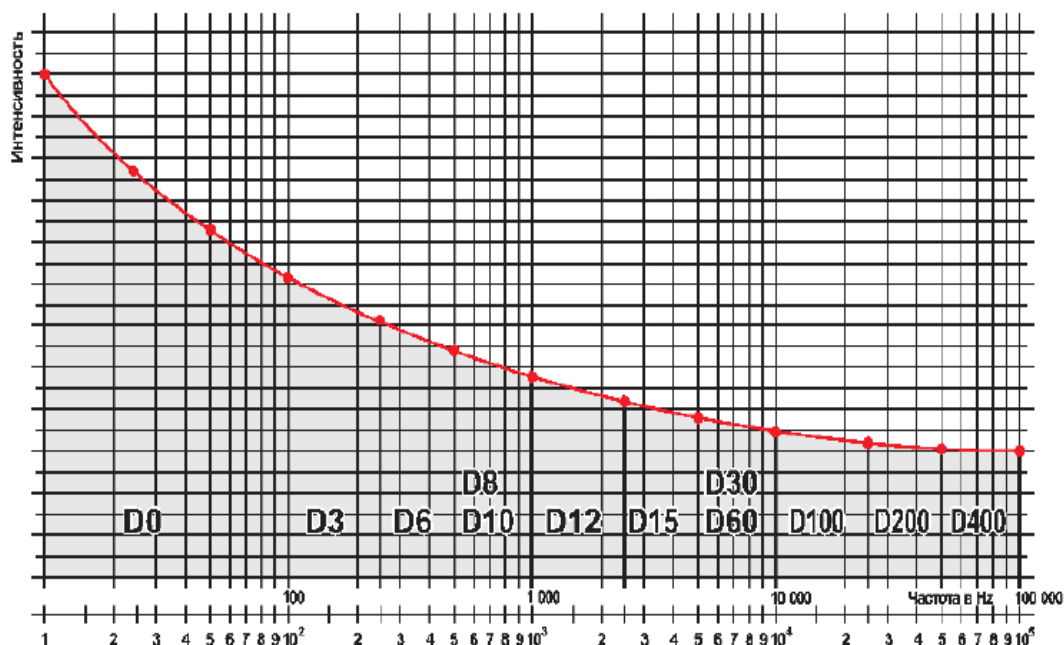
F. Morell's experiments (1977) have proven that homeopathic medications have electromagnetic properties as well. From the point of view of Biophysics, this explains the phenomenon of resonance of the characteristic frequencies between medication and disease. The electromagnetic vibrations constitute the quintessence of the principle of homeopathic medication and in this way the diagnostic test for the appropriateness of medication becomes possible and explainable.

Having been noticed that homeopathic and other pharmaceutical products emit electromagnetic waves, the question concerning frequencies was posed. Multiple tests have shown that *to products of low potentiation correspond low frequencies, to those of middle potentiation correspond middle frequencies to those of high potentiation respectively high frequencies.* Different potentiation of a single medication have different frequencies. Different medications that have the same potentiation have either the same or common ranges of frequency. Therefore, D6 has a effective frequency range in the area of 300Hz, whereas D12 has it in the area of 1000Hz. High potentiations have a frequency range from 9000 Hz to 10000 Hz and above.

The fact that different products of a similar potentiation have similar frequency ranges may lead us to conclude that these products have the same therapeutic effect. However, in spite of all these, this is not the case. Had this been the case, **Sulfur D6** would be as effective as **Phosphorus D6**, or **Medorrhinum D12** would act in exactly the same way as **Diphtherinum D12**. Each medication has its own way of action ("virtus"), which is determined by two factors: the particular characteristics of electromagnetic waves and the particular arrangement of the respective normal vibrations of the organism.

In the materialist perception, the dilution (potentiation) is the number of the units of the element in the solution. The higher the potentiation is, the less material (element) we have in the solution, that signifies (this material) the one or the other pathogen or process. And reversely, the less the dilution, the more material we have in the solution the more intense is the radiation. In Physics, radiation intensity is characterised by the (wave) amplitude. The higher the intensity of the pathological process, the higher the action of the

stimulator (cause) and the greater its quantity is, the more intense the (recorded) vibrations and the greater their amplitude is. Respectively, in acute and aggressive processes the products (markers of pathological process, stimulators etc.) of low potentionings will be tested. *In homeopathic practice, potentionings from D1 to D6 are called low potentionings, from D6 to D12 middle potentionings and above D12 high potentionings.*



On the basis of decimal dilutions, we may draw correspondences with the level of the pathological process:

- Potentionings **D3 - D6** *acute process*,
- Potentionings **D10 - D12** *subacute process*,
- Potentionings **D30** *chronic process*,
- Dilutions after D30 certify the intensity of the immune system. The number D30 is liminal; all dilutions above it constitute the so-called *immunotoxic trail*, i.e. when the element does not exist in the organism, but it has remained in the memory of the immune system,
- **D60** the intensity of the immune system is *high*,
- **D100** the intensity of the immune system is *middle*,
- **D200** the intensity of the immune system is *low*.

The correspondences, by approximation, of the fertilizations or subdivisions used in German and Russian homeopathic pharmaceuticals are presented in Table 1.

Table 1.

Correspondences and symbolisms of homeopathic fertilizations in Russia and abroad.

In Russia		Abroad		Mathematical symbol	
decimal	percentile	decimal	percentile	decimal	percentile
1X	*	D1	*	10^{-1}	*
2X	1	D2	C1	10^{-2}	100^{-1}
3X	*	D3	*	10^{-3}	*
4X	2	D4	C2	10^{-4}	100^{-2}
5X	*	D5	*	10^{-5}	*
6X	3	D6	C3	10^{-6}	100^{-3}
7X	*	D7	*	10^{-7}	*
8X	4	D8	C4	10^{-8}	100^{-4}
9X	*	D9	*	10^{-9}	*
10X	5	D10	C5	10^{-10}	100^{-5}
11X	*	D11	*	10^{-11}	*
12X	6	D12	C6	10^{-12}	100^{-6}
24X	12	D24	C12	10^{-24}	*
30X	15	D30	C15	10^{-30}	100^{-15}
60X	30	D60	C30	10^{-60}	*
100X	50	D100	C50	10^{-100}	100^{-50}
200X	100	D200	C100	10^{-200}	100^{-100}

400X	200	D400	C200	10^{-400}	100^{-200}
------	-----	------	------	-------------	--------------

A single homeopathic product in different potentionings can cause different symptoms of the disease. It is precisely on this point that the diagnostic resonance scales are based, in which the different potentionings of the same product basically serve as the diagnostic criteria of several situations.

PREPARATION AND FORMS OF HOMEOPATHIC PRODUCTS

The methods of electroacupuncture diagnosis and therapy principally aim the use not of allopathic medication, but of products created on the basis of the principle of homeopathy.

In our days, there exists an immense armament of homeopathic products in the form of:

Single-ingredient products (classical homeopathic single-ingredient means) with potentioning from D3 to D1000,

Complex homeopathic products, comprised of several single-ingredient products selected from nosology, nosodes, organic products etc.,

Products in the form of KuF series. KuF series are homeopathic products comprised of ampullas (vials) of different potentionings of the same element. Usually, a KuF series includes ten dilutions: D3, D5, D6, D12, D30, D60, D100, D200, D400 and D1000 hommacord (Hommacord, Injel and Injel forte) that include different potentionings of the products. The coexistence in the same product of different (high and low) potentionings in this way takes i all the stages of the same process (acute and chronic) into consideration.

In electroacupuncture diagnosis both classical and homeopathic products are used, in which nosodes (the third kind of products - the isopathic according to Hanemm), organ-specific products belong, as well as a series of other pharmaceutical means from potentioned industrial toxins, products of the metabolism etc.

NOSODES

Nosodes are means that are produced according to the principles of homeopathy out of microbe cultures, excretions and pathological feces (products of a disease), vaccination products and salines, as well as pathologically changed/mutated organs and tissues that are sterilized and do not contain viral microorganisms.

The “third kind” of therapy in homeopathy practice, isopathy, introduced by S. Hanemm, is regulated by the principle: *equal cures equal (aequalie aequalibus curentur)*. Part of the nosodes are also the potentiated industrial toxins, products of the metabolism of elements, stomatologic materials, allergens et al. Nosode products are used both as diagnostic and as therapeutical means.

The use of nosodes in medicine has a history of many centuries..

The use of nosodes (a derivative of the Greek word “nosos”, i.e. disease) for therapeutical purposes was described for the first time by Hippocrates (460-377 b.C.), who used vomit masses for the cure of acute poisonings and gastrointestinal diseases (vomitus vomiti curantum).

Long before E. Jenner’s works (1796) on the active immunization against chicken pox, Chinese physicians on 800 b.C. made an extensive use of the preventive vaccination against this disease through covering the mucous gland of the nose with rubbed crust out of the patient’s pustule with a light form of chickenpox.

Therapy through nosodes was in wide circulation during the 15th century thanks to the R. Fliund’s works of, who introduced the isopathic means, potentiated self-vaccination and self-nosodes at the therapeutical practice. Subsequently, the method was further developed in veterinary by V. Lux (1820), the American physicians K. Göring (1831), P. Allenti (1908), S. Ganeman in Germany (1843) and P.Collet in France.

In 1965 nosodes were included in the official French pharmaceuticals as specialised biotherapeutical means. In our days, one of the leading pharmaceutical corporations that produces more than 500 different kinds of nosodes for Electroacupuncture Diagnosis and Therapy according to Voll’s method (*Elektroakupunktur nach Voll, or EAV method*) is the enterprise «Staufen-Pharma” (Göppingen, Germany).

For the better selection of nosodes and for conducting recital and differential diagnosis according to the EAV method with their assistance, these (nosodes) are divided in German pharmaceuticals into 22 groups, of which each is symbolized with the respective abbreviation (A-TR) and one number.

There are two ways of preparation for nosodes: 1) in the form of unit potentiation, and 2) in the form of the so-called Ku-F series, which are comprised of 10 ampullas of a specific medication in dilutions from D3 or D5 to D100 or D1000.

The term «KuF-series» originates from the name of the corporation “Kreis & Fritz”, one of the first corporations that started producing diagnosis devices and medication tests through the EAV method.

KuF series are convenient for conducting the EAV test on nosodes and provide the possibility (with the use of the EAV device) for the required potentiation (for the patient’s therapy) to take place.

The characteristics of the different KuF series of nosodes are summarized in Table 2.

Table 2.

The characteristics of the groups of the KuF series.

Group	Characteristics and indications of use
A	Bacterial, hormonal and lymphogenic nosodes.
B	Nosodes of acute and chronic diseases of small and large intestine.
C	Nosodes of bacteria and viruses that cause diseases of the bronchopneumonic system.
DA	Nosodes of acute and chronic diseases of the nerve system.
DEG	Degenerate nosodes (pre- and oncological diseases).
E	Nosodes of inherited toxins.
G	Nosodes of animals, gastric diseases, diseases of the duodenum

	and of the hepatobiliary system.
H	Nosodes of arthritic diseases.
K	Nosodes of ENT (Ear-Nose-Throat) diseases.
L	Nosodes of hematological diseases.
M	Nosodes of urological diseases.
N	Nosodes of skin diseases.
O	Nosodes of ophthalmological diseases.
P	Potentiated allopathic means, antibiotics, analgesics, sedatives, psychotropic medication et al.
Q	Potentiated carcinogens, industrial toxins, chemical solvents and other ecological toxins.
R	Potentiated insecticides, herbicides, biocides, pesticides and preservatives.
S	Potentiated allergens of plant and animal origin.
Sto	Potentiated products of metabolism, of nitric acid circle and quinones
Z	Nosodes of dental diseases and of diseases of the tissue of oral cavity.
ZW	Potentiated dental materials.
TR	Group of newly-discovered nosode tests.

During the use of nosodes, the first and the immediately following, potentiation are selected on the basis of the results (of the test) and are introduced gradually, starting from the lower D3-D5, then the middle D6-D15, or high (above D30). The selection of the appropriate potentiation is facilitated

through the determination of the original situation of the organism (see Table 3.).

Table 3.

Relative correspondence of potentionings (of the nosodes) in the pathological situation.

Situations of the organ or of the tissues of a system	Potentioning
Extensive acute inflammatory process	D3
Acute or catarrhal inflammatory process	D4
Subacute, focal or local inflammatory process	D5
Pre-pathological disorder of the function of an organ or tissues	D6
Zone of normal intensity in the function of an organ or tissues	D6-D8*
“Ideal” level	<+1->
Initial stage of dystrophic process, disorders in the metabolism	D8-D10*
Progressive dystrophic process	D12-D30*
Dystrophic process with partial atrophy of cell structures of an organ or tissues	D30-D100*
Full atrophy or malignant mutations of cell structures of the organ or tissues	D100 and above

*- possible movements of the dilution upwards or downwards.

Moreover, with the aid of the electro-diagnostic device, we can test the efficiency of the therapy we conduct, “side-stepping” those potentionings (doses) that have not caused an improvement (of the parameters of the respective organs and systems). In this way, we may adjust the frequency of

the reception of doses, e.g. from daily, weekly or monthly to a therapeutical treatment through reception every 10 days up to 1 month.

In certain cases of therapy of chronic diseases, positive results both at a test level and at clinical reception may be given by the complex nosodes which include some potentionings at the same time. Complex nosodes are produced by “Heel” corporation (Baden-Baden, Germany) in two forms: “Injeel” and “Injeel forte”.

“Injeel” form includes combinations of three dilutions of the respective nosode: D10, D30, D200 or D12, D30, D200 in equal analogies of 33.3 ml that are prescribed once every 1-2 weeks.

“Injeel forte” form includes combinations of four dilutions of the respective nosode: D8, D12, D30, D200 or D15, D20, D30, D200 in equal analogies of 33.3 ml that are prescribed once per month.

Basic indications for the use of nosodes:

1. Preventive or therapeutical reception, taking into consideration the cause of the disease, the epidemiological situation in the family, the workplace or the possible offence through contact (for example, in contacts during the periods of elation of flu, in contacts with patients with molysmatic hepatitis et al.).
2. Use of nosodes taking into consideration the basic rules of homeopathic, for example, “similars cure similars”.
3. Use of nosodes taking into consideration the deferred recital diagnosis (i.e. the data of recollection of his/her diseases).
4. Use of nosodes in the period of rehabilitation or unstable recession of a chronic disease.
5. Use of nosodes taking into consideration the results of VRT-diagnosis.

Experience of the clinical use of nosodes shows that, through their effect, the resistance of the organ-receiver and of the cell membranes of the organism of infected carriers and toxins is increased, the convulsions of vessels, the renal artery, the lymphatic capillary vessels are restored, the antitoxic action of the lymph is increased, neurotrophical disorders are restored, the processes of cell breathing are improved.

During the reception of methods for therapeutical purposes, especially of high potentionings (above D30), their combination with homeopathic dried means or products that improve local lymphodynamic is suggested; for example:

1. In diseases that are accompanied with the development of situations of metabolic depression or of deficiency of the immune system: ***Arsenicum jodatam (Arsenum jodatam)***.

2. In chronic infectious diseases due to the persistence of L-form bacteria: ***Lithium carbonicum***.

3. During the dysbacteriosis of the large intestine or intestinal self-toxicosis: ***Aciidum carbolicum***.

4. In liver diseases: ***Berberis, Cardus marianus, Chelidonium, Hamamelis, Taraxakum, Oxalis acetosella***.

5. In large intestine diseases: ***Baptisia, Berberis, Carbo vegetabilis, Hydrastis, Sedum acre, Kalium phosphoricum***.

6. In rectum diseases: ***Causticum, Natrium choleinicum, Ruta, Scrophularia***.

7. In gastric diseases: ***Argentum nitricum, Asa foetida, Condurago, Hydrastis, Moschus, Ornitogallum***.

8. In subgastric gland diseases: ***China, Senna, Imperatoria, Scrophularia***.

9. In gallbladder diseases: ***Magnesium sulfuricum, Mercurius dulcis, Ptelia trifoliata, Natrium sulfuricum, Ornitogallum***.

10. In kidney diseases: ***Ac. Nitricum, Berberis, Ruta, Equisetum, Sarsaparilla, Solidago, Urtica urens***.

11. In pneumonic diseases: ***Coccus cacti, Kalium bichromicum, Kalium sulfuricum***.

12. In cardiac diseases: ***Cactus, Convalaria, Crategus, Oleandr, Scrophularia***.

13. In local lymph plexus disorders: ***Phytolacca, Stelaria media, teuricum Scorodonia***.

POTIONED ALLOPATHIC MEANS

This term refers to the allopathic medications with a homeopathic manner of production.

This category of products is suggested for the therapy of the diseases caused due to the reception of allopathic products and is prescribed according to the isopathic (or isotherapeutic) principle, following which, a potentiated product that was also the cause of the specific disease is also used for combating the disease.

And since, according to Dr. F. Hoff, the consequences of an allopathic therapy are the most widespread cause of diseases, these products have a wide range of indication. In addition, it should be noted that the names of these products, in most cases, contain an indication of their basic allopathic ingredient (the so-called generic name of the allopathic product that caused the disease).

It is also necessary to note that the potentiated allopathic products can be taken not only according to the isopathic principle, but also according to the homeopathic rules, which is something that enlarges significantly the possibilities of therapy.

The use of potentiated allopathic products according to the principle of “similars” allows us to achieve better therapeutical result than the isopathic method because in isotherapy the product (which caused the disease) acts on the already offended receptors of the defense system that are not able to resist (this product).

The essence of the principle of homeopathic therapy (rules of the similars) lies in the activation of the similars, yet non-activated, backup immune mechanisms with the aid of anti-homotoxic products.

Even stronger action may be inferred by the additional injections of products *Coenzyme compositum*, *Ubichinon compositum*, *Hepar compositum*, which activate the enzymatic systems.

Potentiated ecological toxins (potentiated chemical toxins)

This group of nosodes is closely associated with the group of organic products and in some orderings and collections they are unified in a single category. Potentioned chemical toxins are used on the basis of the principle of similarity. For example, in poisoning with nitrates, such potentioned chemical toxins will be used for their rapid removal from the organism as *Acidum nitricum*, *Argentum nitricum*, *Kalium nitricum*.

Potentioned products of metabolism and the means that affect the metabolism of the tissues.

The potentioned products of metabolism, or the catalytic means (intermediate catalytes) as we find them in the bibliography, are widely used in complex homeopathy. These products are suggested for cases in which the degenerate phase of the disease is in process. These play an important role in the enzymatic mechanism, which is responsible for the production of energy and for the neutralization of free radicals. The therapeutical mobilization of endocellular enzymatic systems can play a decisive role in the therapy of chronic, degenerating, oncological diseases, offences from viruses, taking always into consideration the rule of the similars. Aside from single catalytes, there are also complex structures: *Coenzyme composition*, which includes all the catalytes from the range of the nitric acid, and *Ubichinon compositum*, in which quinones are also included.

Finally, we would like to note certain other possible action mechanisms of the nosodes which have been rendered intelligible only during the previous years thanks to the fundamental pieces of research in the area of the interaction of processes of degeneration and the immune system.

Therefore, it has been indicated that the reception of small doses of several industrial poisonings and of products of metabolism causes an increase in the recuperative action of the cells of certain organs.

For example, carbon (IV)chloride, bilirubin, DDT, fatty acids cause the recuperation of the function of the liver and particularly of the mitotic activity of liver cells by 25-27 times.

Analogous results are also observed during the use of several bacterial mitogens that activate not only lymphatic cells but the cells of other tissues as well: mesothelioma, endothelioma of vascular walls, fibroblasts, liver cells, small intestine cells, skin cells, kidney cells, heart cells, muscle cells, pneumonic cells. Up to this point, we assume that on the base of this process lies: a) the interaction of cells (responsible for the immune system) with the target-organ, and b) the division of its (the organ's) cells from specialised lymphatic quinones.

ORGAN-SPECIFIC PRODUCTS

Organ-specific products (OSP) are widely used in electroacupuncture therapies and diagnosis.

Among the most leading companies producing more than 400 different OSP are the corporations "WALA" (Bad Boll, Germany) and "HEEL" (Baden Baden, Germany).

Therapy with the aid of OSP was applied for the first time in 1920 by G. Steiner, who called it "cell therapy". Later, this area was developed by R. Dieter, A. Selavri, F. Haan, R. Voll, H. Vogel and O. Julian.

Organ-specific products are produced from the organs and tissues of gnathobiotics, from young cattle (produced by "WALA" corporation), or pork (produced by "HEEL" corporation), that are bred in special sterilized farms.

In essence, the characteristics of the organ-specific products (especially those concerning their frequencies) serve as health models, since they have normalized functions and morphological peculiarities. For the examination of the situation of organs and systems we suggest the use of organ-specific products with dilution D4, produced by "WALA" corporation.

The process for the production of OSP includes taking a specific part of the organ or animal tissue *ex tempore*, its homogenization in a glycerin solution, the reception of the suspension and its subsequent potentiation in saline solution in decimal dilution from D2 to D30 and above.

Observing the action mechanisms of the OSP, H. Vogel indicates that through their action, on the one hand, the processes of restoration are accelerated, but, on the other hand, the endurance of the cells (of organs and tissues) to several harmful factors is also increased. These results may serve as an instigation not only for the special mobilization of the mitotic action of the cells of a certain organ, but also for new formations in levels of “embryonic” centres around which (according to process models of self-composition self-organization) an ordered and uniform tissue is created.

The above consideration is also verified from the results of the pieces of research of R. Dieter and F. Haan, which showed that the histological distillates (even in high dilutions) of healthy organs, create during crystallization a special for each organ spatially-ordered and with a specifically oriented fractal structure that resembles the histological arrangement of the cells in the organ (for example at the domes of the liver et al.).

We should note that some of the organ-specific products used in the electroacupuncture diagnosis and therapy have their allopathic “correspondences” which are widely used today in clinical practice as biogenic activators. At this point, it is might be useful to remind the well-known biogenic products, such as laronit, honsurit, rumalon, splenin, plazmol, polibiolin, korgormon, raveron, solkosril, cerebrozilin, lidaza, timozin, epifezin, retiling, timogen, sirepar, vitogepat, as well as some hormonal products: thireodin, kortikotropin, intermifin, pituitrin, parathiroidin et al.

Comparing the organ-specific products with their allopathic correspondences, we should note that the former practically do not cause side-effects in contrast to some biogenous products (cerebrolizin, raveron), whose technology of preparation presupposes the use (as a preservative) of a phenol solution, which increases the heterogenesis of the medication.

In recent years, increased interest is observed in the use of organ-specific products prepared out of the cells of human embryos received in cases of abortions in clinical conditions.

The introduction of embryonic cellular composites to patients with chronic destabilizing diseases of the central nervous system (CNS) and genetic anomalies of development (Down disease) brought in a series of cases basically positive results.

Basic indications for the use of products: modulation of the damaged structure and function of the damaged or non-developed organ or system, transport of other pharmaceutical means (plant or mineral) at the site of the offence.

Organ-specific products with a low grade of potentiation (D3 - D6) are used for combating chronic diseases (on destabilizing, dystrophic, atrophic processes) and their implications. Organ-specific products of high potentiation are used for the therapy of inflammatory diseases and the normalization in the function of the organ in cases of its overfunctioning (D10 - D30). For example, the dilution D30 in a quantity of one or a few vials is used for the therapy of acute inflammations, the dilutions D20, D15 and D12 are used at the state in which the gravity of the inflammation is increased, the dilutions D12, D10 and D8, which are taken once or twice (consecutively) are used during the transition of the disease at the subacute phase, whereas when balance has been achieved, D6 is introduced 3-4 times.

For the therapy of severe degenerating diseases characterized by persisting endurance, the use of a few vials of a specific organ-specific product (OSP) in a dilution D2 or D3 is suggested, with a gradual increase in the dilution up to D4, D5 and D6, under constant observation with the aid of the tests.

Table 4.

Correspondence of dilutions of organ-specific products with the grade of the pathological process.

Situation of organs or tissues of a system	OSP Potentiation
Extensive acute inflammatory process	D30
Acute or catarrhal inflammatory process	D15
Subacute, focal or local inflammatory process	D12
Pre-pathological disorder of the function of an organ or tissues	D10-D8
Zone of intensity in the function of an organ or tissues	D6

“Ideal” level	-
Initial stage of dystrophic process, disorders in the metabolism	D5
Progressive dystrophic process	D4
Dystrophic process with partial atrophy of cell structures of the organ and tissues	D3
Full atrophy or malignant mutations of cell structures of the organ and tissues	D2

One of the definitive particularities for the therapeutical efficiency of the organ-specific products is the pharmaceutical precision of the immediate effect on the functions of the respective organ or tissue. The functional perfection of the organ or system of organs of the one or the other animal determines the choice of the base (basic ingredient) for the production of organ-specific product. For instance, tissues of the joints of a young bovine are used for the therapy of degenerating and inflammatory diseases of the musculoskeletal system, the blood and the lymphatic organs of the horse are used for the production of organ-specific products in cases of blood pathology etc. Embryonic organ-specific products render possible the creation of a union with three embryonic plates that are found at the bottom of the formation of the three basic systemic organs. Thanks to this, the return of an advanced pathological situation to that point in which it may become susceptible to amendments is achieved. Taking into consideration the multiple forms and the variety of tissue structures and animal organs with their particular biochemical and histological properties, organ- or tissue-specific products are prepared: from organ-specific products of separate structures (Cortex cerebri, Corpus luteum) to a whole organ (Cor, Prostata, Ren, Hepar) or histological systems (Medulla ossium, Mesenchym, Liquor cerebrospinalis).

Complex products.

In the recent decades, complex products are increasingly set in circulation abroad: homeopathic composites that include standardized collections of homeopathic means in balanced potentionings that are also tested themselves at the acupuncture points. For example, for the activation of the immune system the product **Echinacea compositum** is used, comprised of 26 homeopathic ingredients in determined potentionings. For the therapy of liver and bile routes, **Hepar compositum** is used, comprised of 26 different ingredients (HEEL). The compositions of O.T.I. are of particular interest, especially, “Alfa-Omega” products series, Cosmochema, Dr. Reckevogel, Dr. Grauberg as well as the R. Martina products.

Complex homeopathic products are an achievement of contemporary homeopathy, which in association with classic homeopathy secures much higher therapeutical result.

Defilements

The idea of defilements occurred to Hahnemann during his long-year treatment of patients with chronic diseases. Hahnemann noticed that a acute appearance of the disease I restored relatively easily; however, its nucleus vehemently resists and does not disappear. The manifestations of the disease recur with alternations under different forms and in different organs and systems. The impression is created that the disease wanders in the organism independently of the physician’s effort and that some deeper process, some encumbrance as if by birth occludes rehabilitation. This encumbrance was called by Hahnemann defilement. This corresponds to the concepts for pathological predisposition, pathological syntagm, Hippocrates’ dyskrasia, and innate disease.

Hahnemann gave different names to each of the defilements: ***Psora***, ***Sycosis***, ***Lues***. These also signified the three ways of reaction to diseases which was caused by a factor of infection.

Psora was formed by itch and leprosy, sycosis had to do with gonorrhoea, whereas lues was the result of syphilis.

From the earliest times, the above were widely spread everywhere, they were not easily cured, they did so mainly at a superficial level and they entered deeply into the organism.

The adverse implications were accumulated, leaving irreversible damage for the rest of one's life and what is even worse, for posterity. In contemporary clinical homeopathy the concepts used are "***miasmatic charge***" and "***miasmatic toxic offence***".

Miasmatic charge is a peculiarity of the organism's reaction to external factors which is transmitted through inheritance (genetically predetermined).

These are manifested in the external appearance of the person, physical-bodily reactions, character differentiations and his/her behaviour.

Three types of miasmatic charges are distinguished: ***tuberculin***, ***hepatic*** and ***syphilitic***.

Each person, from the moment he/she is born, has symptoms of weakness of the organs which originate from an embryonic plate. This is where the concept of miasmatic charge originates from. Miasmatic charge to a person can be only one and this can be transmitted to children from their parents according to Mendel's law.

In tuberculin charge, in order to equalize the action of any external factor, the organism reacts normally by reducing the functionality of the organ or the system at which the action of the pathogenic factor aims, whereas in the compensation it reacts with an increase in functionality.

A human organism with hepatic charge reacts normally against the action of an external pathogenic factor with an increase in functionality, whereas in the compensation it reacts with a decrease in functionality.

In syphilitic charge, the organism always reacts with malfunction (forged function).

Miasmatic charge cannot be changed; it can only be taken into consideration during prescription of products and the prediction of the development of the disease.

Miasmatic toxic offence is the toxic offence during lifetime from activators of tuberculosis (tuberculin toxic offence), gonorrhoea (hepatic toxic offence), or syphilis (syphilitic toxic offence).

Toxic offences can be one or several at the same time.

A person may obtain toxic offence in several phases of his/her lifetime: During the intrauterine phase, i.e. inside the mother's uterus (hepatic, syphilitic). During early childhood and childhood (tuberculin). During puberty (tuberculin, hepatic and syphilitic with the beginning of sexual activity). In adult age, just like in puberty (tuberculin, hepatic and syphilitic).

Moreover, toxic offences can be obtained in all possible associations, making thus harder and more confusing the clinical portrait of the disease.

GÖRRING'S LAW FOR THE DIRECTION OF THERAPY

One of the most important rules for any required therapy that will allow the physician to make the right assessment was discovered by Hahnemann's student, Konstantin Görring (1800-1880). Even though the inventor of the rule characterized it as a rule of homeopathic, it has a general character. This rule concerns the appearance and disappearance of symptoms during therapy.

Rehabilitation is performed properly when symptoms change:

1. From top to bottom.
2. From inside out.
3. From the centre to the periphery.
4. From the more important organs to the less important ones.
5. In a reverse order vis-à-vis their order of appearance.

From top to bottom.

In the confines of the same layer, in one and the same system, in one and the same disease, in one and the same defilement.

For example, skin rash on the face disappear, but pains at the knee joints begin. This is not a direction from top to bottom, since the offence was transferred from one layer to the other.

In case of an arm and leg paralysis, the improvement has to occur in the arm first and then at the leg. If, with the aid of physiotherapy the movement of the leg is restored first and only afterwards an improvement in the arm occurs, this will cause permanent deformation of the arm.

In case numbness (immobilization) in the shoulder, face, finger and shoulder joints occurs, then the improvement has to occur with the following order: face>shoulder joint>shoulder>finger. This is the direction of therapy that is called the direction from top to bottom.

From inside out

The offence has to leave from the inside, i.e. from the more important organs to the less important ones, from the more important system to the less important one, either in the confines of one system or the symptoms have to be carried from inside out.

In cases of asthma or respiratory disorders, the patient initially develops wet cough, (more excreta are sent outside) and the stagnancy of the thoracic cavity disappears. Subsequently, dry and annoying coughing appears due to irritation of the pharynx. Finally, excreta from the nose and sneezing of the patient are noted. Never evaluate cough or sneezing as an independent disease. They are reflexive reactions of the organism, in other words a manifestation of its defensive mechanisms. It seems that such a move takes place from top to bottom, but in reality it is a move from inside out.

To a patient lying in coma with brain damage after the prescription of medication, swelling in face and body occurs. This case is a move of symptoms from inside out.

Stone retreat from kidney to the upper third of the ureter and then at the urinary bladder is a move from inside out, even though we could evaluate this as a move from top to bottom.

After the therapy of pleural effusion to a patient, “disseminated” pneumonic tuberculosis is caused, and then the creation of a cavity in the lung. This is a negative indication.

From the centre to the periphery

During the homeopathic therapy of psoriasis, peeling begins to disappear from the crown (centre) of the head and then from the whole of the head. This is a good indication.

In cases of chicken pox, eulogy, measles and herpes, rashes are spread from the torso to the limbs. This is determined from the fact that in such viral diseases skin rashes appear because the organism tries to rehabilitate with its own powers. There is no reason to intervene in such a course since it follows Görring' rule.

From the more important organs to the less important ones.

Every organ, every system of organs is very important for life. This importance is defined by the hierarchy of layers presented at the Suppression Diagram (Figure). Even within the confines of a single layer, different systems have that importance which is analogous to the stages of their embryonic development.

In case after the therapy of a pain at the joint arterial hypertension occurs, this is a negative sign because joints belong to the associative tissue that is developed from the mesenchyme, whereas the heart is an organ of vital importance that is developed from the mesothelioma. For this reason the offence of the heart, which is a more important organ than joints, is a negative indication.

In case the asthma disappeared during therapy but a disorder at the menstrual cycle occurred, this is a negative sign. This fact testifies that the offence moved from the endoderm to the endocrinal system.

Sometimes after the disappearance of arthritic pains, vitiligo occurs. Although it is a skin disease, its pathological characteristics and its origin have peculiarities. Vitiligo is defined by the "suppression" of melanin, a hormone that is excreted by the endocrinal system (structures between anterior and posterior pituitary). In this way, we understand what is important and what is not.

In a reverse order vis-à-vis their order of appearance.

This means that the reverse order of symptoms has to follow the right order of embryonic layers, and then it has to be found within the confines of one layer.

In case the skin rashes appeared initially at the face, then at the arm and then at the leg, but subsequently cough and cold symptoms appeared, then in case of a right direction of rehabilitation breathing diseases are the first to disappear; next, skin rashes disappear in a reverse order vis-à-vis their creation. In case skin rashes at the leg were also the last to appear, the changes have to occur from top to bottom, i.e.: face-arm-leg. In this example, the reverse order in the creation does not matter.

In case a patient felt pains at the joint, then arterial pressure developed and afterwards diabetes, then during therapy diabetes disappears first, then hypertension and finally arthritic pain. In this case, rehabilitation is conducted in a reverse order in relation to the appearance of syndromes.

Dr. RECKEWEG'S THEORY OF HOMOTOXICOSIS

One of the most serious efforts to disclose the objective processes found at the bottom of the appearance and development of pathological processes in the organism are Hans Heinrich Reckeweg's views, founder of homotoxicology and antihomotoxic medicine.



*Ханс-Хайнрих
Реккевег*

In the bases of homotoxicology one finds the perceptions for the mechanism of the creation of all diseases due to accumulation of homotoxins in the organism (toxins that encumber the human organism) and the possibility of detoxification of the organism with their entrapment and their conversion into the so-called homotoxins. Toxic elements (endogenous and exogenous toxins)

cause defensive reactions to the human organism, a manifestation of which are the diseases. The essence of a disease lies in the restoration of the wet system that was disturbed by toxins. Diseases are the states of toxicosis that were caused from homotoxins, as well as the defensive mechanisms that aim to the restoration of the organism.

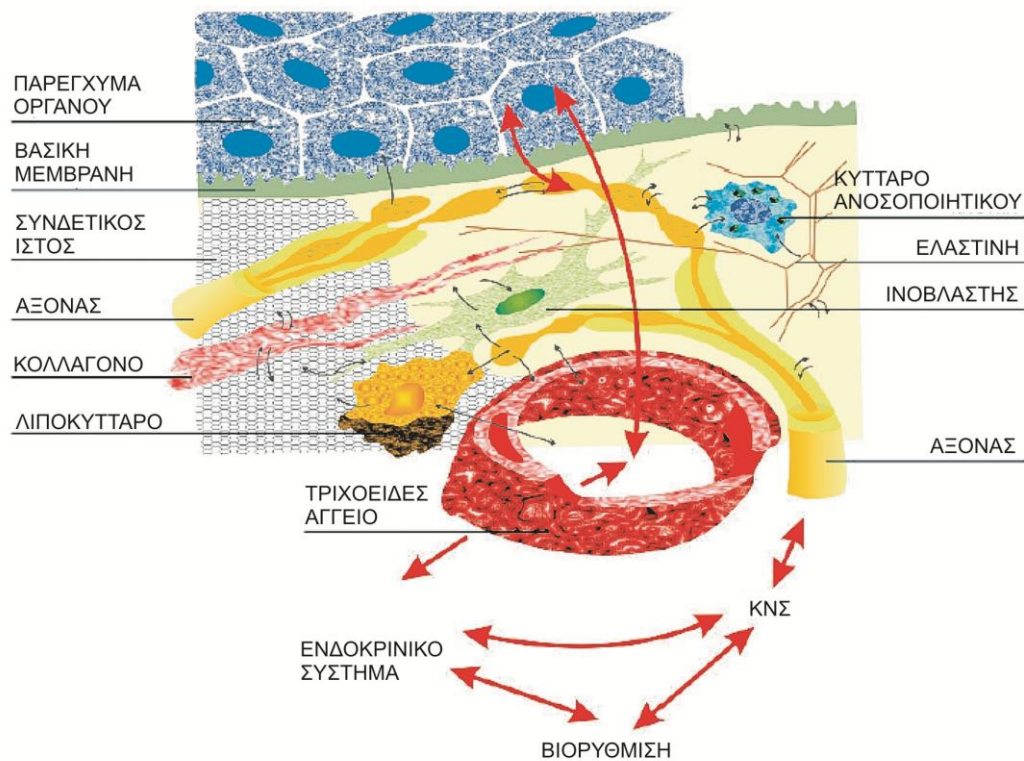
H. H. Reckeweg regards as homotoxins all chemical, biochemical, as well as natural and psychic factors which may cause a disturbance in the health of a person. The appearance of these pathological factors is determined by the regulative disorder in the organism. Homotoxins may have both an external as well as an internal origin.

All functions of the organism, according to H. H. Reckeweg, are performed at the extracellular matrix and the accumulation process of homotoxins at the mesenchyme is the cause and the realm of action of all diseases.

The *extracellular matrix* or ECM unit is a three-dimensional phlegmatic structure that includes the cells of the organs in all dimensions. This matrix is a molecular cluster, comprised of *highly multilateral carbohydrates and proteins* (proteoglycans, glycosaminoglycans), *structural proteins* (collagens, elastin) and *connective glycoproteins* (fibronectin). Proteoglycan/ glycosaminoglycan bands have negative electric charge and can be joined with water and take part in the ionic metabolism. In this way, they secure the tonic, ionic and osmotic balance of the extracellular matrix. The structure of the ECM unit is organized in a way that allows it to execute its normal role as a bionatural filter.

Due to the fact that the extracellular environment forms a unified functional space with the cell, the cell may react to an irritation by itself when the piece of information comes to it by the intracellular space. The dynamic structure of this space and its regulatory principles (basic regulation system) also determine the effectiveness of the extra-and intra-cellular catalytic processes. And these depend, in turn, by the structure of the basic matrix (which is also called matrix or extracellular matrix).

ΜΕΣΕΓΧΥΜΑ



The picture shows the interaction among capillaries, lymphatic vessels, the basic matrix, the terminal vegetative axes, the cells of the associative tissue (fat cells, fibroblasts etc.) and the cells of the parenchyma of the organs. The epithelial and endothelial cell bands are found beneath the basic membrane, which communicates with the basic matrix. On the surface of all cells, there is an associative layer with the basic matrix, the glycoprotein or fatty membrane, in which the bands that secure compatibility of the tissues are also found. The basic matrix is functionally associated through the capillary bed with the endocrinal system, as well as with the CNS through axes. The fibroblast is the centre of the processes of metabolism.

The fibers of the vegetative system that end up at the extracellular matrix secure the association with the CNS, whereas the capillary bed secure the association with the endocrinal system. These two systems, in turn, interact through the centres at the human brain. For this reason, the matrix regulates its function not only with the aid of the local, but also with that of the central mechanisms. The control centre of the extracellular matrix is the fibroblast (its correspondence at the CNS are the glial cells). In any information entering whatsoever (hormones, neurotransmitters, metabolites, change in the

level of acid environment) the fibroblast reacts by changing the composition of the ingredients of the extracellular matrix.

The particular characteristics of the extracellular matrix are of particular importance here (for example, the capability of association of the proteoglycan - glycosaminoglycan bands), because there is always the danger of “excessive rust” - smelting of the extracellular matrix, which causes the creation of oxidation of the tissues, the creation of free radicals and the activation of the proteolytic system, which causes a pre-inflammatory situation; and the result of this can be chronic diseases and malignant tumours.

	Humoral phases		
Organ system			
	<i>1.Excreta</i>	<i>2. Inflammations</i>	<i>3. Depositions</i>
Skin	Transpiration	Acme	
Nerve system	Attention deficit	Meningitis	
Sensory system	Tears, otorrhoea	Conjunctivitis, otitis	
Musculoskeletal system	Pain in joints	Epicondylitis	
Respiratory system	Cough, sputum	Acute bronchitis	
Cardiovascular system	Cardinal functional disorders	Endo-, peri- and myocarditis	
Digestive system	Heartburn	Gastroenteritis, gastritis	
Urological-genital system	Polyuria	Infection of urinal routes	
Blood	Reticulocytosis	Leukocytosis, suppuration	
Lymphatic system	Lymphaedema	Lymphangitis, tonsillitis Lymphadenitis	
Metabolism	Disturbances in the balance of the electrolytes	Disturbances in the metabolism of fats.	
Hormonal	Choking	Thyroiditis	
Immune system	Tendency to diseases	Weakness of the immune system, acute infection	

	Stimulation	Reaction	
Psychism	Functional psychic disorders, “nervousness”	Reactionary depression, hyperactivity syndrome	

H. H. Reckeweg created a quite representative table for the evolution of homotoxic reactions in phases. Each following phase depicts the gradual offence of deeper and deeper structures of the organism and more serious changes, which have to do with the accumulation of homotoxins. The phases move from left to right.

HUMORAL PHASES

These depict the evolution of the disease at the level of reactions to the humoral environment of the organism, a fact which means that the structure of the cell has not been influenced.

First phase -excretion phase. Its characteristic feature is the excretion of homotoxins through the normal pores, both of the organism as a whole and of the organs and fibers. Excretion is the first thing an organism does in order to release itself from homotoxins and their effects, irrespectively of their kind: toxic particle, virus, bacterium, or any other useless or harmful substance. The processes of excretion include defecation, urination, transpiration, menstruation, lacrimation, suppuration, excretion etc.

Example in level of pathological manifestations

Manifestation at the level of tissues	Example	Time
Hyperemia	Allergic rhinitis	Seconds
Transpiration	Transpiration	Minutes
Exudate	Vommit	Hours
Diarrhea	Urticaria	
	Diarrhea	
	Allergic bronchitis	

	Polyuria	
--	----------	--

Second phase -inflammation phase. Through the inflammation mechanism, toxins are neutralized, destroyed and eliminated at the environment. This phase is characterized by apparent processes of elimination of homotoxins from the organism in association with fever, inflammation (redness, saturation, swellings, suppuration) and pains. The inflammatory phase is also called reactionary. This refers to the reaction to an unsuccessful attempt and an insufficiency of the cleaning (percolation) during the excretion phase. Inflammation and pain are unpleasant factors in the reaction phase, but they contribute to the increase in the body temperature, thanks to which the processes of metabolism are achieved and the more rapid transition to the first phase, the excretion, is achieved.

Example in level of pathological manifestations

Manifestation at the level of tissues	Example	Time
Redness	Anaphylactic shock	Seconds
Edema	Rash	Minutes
Pain	Leukocytosis	Hours
Leukocytosis	Pneumonia	

Humoral phases are easily reversible; they correspond to the excretion and during therapy we have to target to the transition at the next, deeper phases to the humoral ones, which is something that, according to Görring’s rule, will correspond with the move of the process from inside out.

ECM PHASES

These phases are intermediate between cellular and humoral excreta.

Third phase - deposition phase. This is characterized from benign depositions, something that causes secondary diseases, for example, as a consequence of the decrease in free space or excessive weight.

Example in level of pathological manifestations

Manifestation at the level of tissues	Example	Time
Lymphonodulitis (inflammation of lymphatic nodes)	Permanence of reactions Lymphonodulitis Hyperplasia of tonsils	Days Weeks Months
Hepatomegaly Splénomegaly		

Fourth phase -saturation phase. This phase is latent. Homotoxins enter the internal cellular space; they offend the structures inside the cell and the enzymes and disturb the function of the cellular membrane. This phase may unfold latently and become a Locus miniris resistentiae, i.e. to become the weak link of the processes performed in the organism. In the beginning of ECM phases, the organism is unable to eliminate homotoxins appropriately, and for this reason its only way out is the deposition of homotoxins, and then their penetration in the cell (beyond the biological threshold) -saturation phase. This threshold symbolizes the so-called biological intersection, an imaginary borderline between the deposition and saturation phases and serves as the criterion for the transition of the pathological process to the level of organic changes. In other words, this intersection restricts the processes of simple deposition (accumulation) of homotoxins at the ECM form the processes of intrusion (penetration) of toxic substances to its structural ingredients. In essence, the fundamental difference in the interpretation of acute and chronic diseases is determined according to this view of homotoxicology. These phases are separated by the biological threshold, which allows us to examine and appreciate in greater depth the role that the cell membrane plays as a biological boarder of the phases at a pathological process. Whereas during the deposition phase the simple removal of homotoxins is possible (acute and subacute phases of the disease), in the saturation phase, there are already structural and functional changes and the removal of homotoxins in itself by the organism becomes harder (chronic diseases).

According to Görring's rule, the movement from the phases of the first block to those of the second is a deterioration of the pathological process, i.e. its

move from outside to the inside, which is something that we frequently observe due to the permanence of the disease that was caused by the use of allopathic therapy. However, with the right cure the development of the pathological process from ECM phases to humoral phases is an important beneficence for the patient.

Example in level of pathological manifestations

Manifestation at the level of tissues	Example	Time
Amyloidosis	Rheumatic nodes	Months
Haemosiderosis	Gout	
Rheumatic nodes	Storage diseases	Years
	Gangliosidosis	
	Haemosiderosis	
	Sarcoidosis	

CELLULAR PHASES

These are hardly reversible phases. When these phases occur, the organism has suffered important damage in the form of deep structural disorders. In spite of all these, however, even in these phases the removal of homotoxins is important, since the latter, when they are accumulated in the organism at constantly greater levels, can irreversibly block the function of the organs, whereas with their proper removal (according to the situation) we cannot exclude a possible structural restoration of the already destroyed structures.

Fifth phase - degeneration phase

This is characterized by the dissolution of the intracellular structures as a consequence of the actions of homotoxins, something that causes the creation of degeneration products. According to Reckeweg, and organic disorders already prevail at this moment.

Example in level of pathological manifestations

Manifestation at the level of tissues	Example	Time
Necrobiosis Fibrosis Atrophy	Fibrosis Hardening Cirrhosis Silicosis Asbestosis Emphysema Atrophy	Years Decades

Sixth phase - neoplastic phase. The action of homotoxins causes the development of neoplasms in several tissues. Reckeweg treats this phase as a biologically intended effort of the organism to preserve to life by accumulating the homotoxins at the malignant tumours (the so-called “preservation principle”).

Example in level of pathological manifestations

Manifestation at the level of tissues	Example	Time
Benign and malignant tumours	Benign neoplasms Malignant gumma Fibrosis Neuroma Exostosis Carcinoma	Years Decades

It becomes clear from the above that the cellular phases are a process of deeply advanced changes and depict the situation of an organism “crammed in the corner” and that the course of the cellular phases to ECM phases will be importantly good news for the patient.

Vertical biological threshold between the deposition and saturation phases.

This is a classical ordering of pathological situations, as suggested by H. H. Reckeweg, under which the capability for self-regulation is preserved and the theoretical possibility to achieve full restoration of the patients exists (excretion, inflammation and deposition phases) as well as of the situations with disturbed self-regulation and which are practically irreversible (incurable) (phases found at the right of the biological threshold).

Horizontal biological threshold between the neoplastic and the other phases of homotoxicosis.

This conventional distinction of phases of homotoxicosis emerges on the basis of energy criteria and underscores the characteristic reconstitution of the metabolism during the progress of the disease, in other words the prevalence of the metabolism without oxygen (glycolysis) vis-à-vis the more convenient in terms of energy metabolism which is depended on oxygen (oxidation) Therefore, during the neoplastic phase, the glycolytic course of metabolism prevails; at the level of the vertical biological threshold half the cell force is lost with the reception of energy from oxidation.

Biological thresholds (intersections) are conventionally distinguished according to morpho-physiological characteristic limits that determine the opposing capabilities of the organism to react to the combat against homotoxicosis.

A crucial phenomenon for the understanding of the disease is that of vicariation, i.e. the move of the disease from one phase or tissue to another during its development or as a result of therapy.

The aim of the therapy, according to homotoxicology is the activation of the defensive forces and the move of the disease to the normal phase of excretion, in which the toxins are discarded from the organism through natural routes (in other words, retreat of the disease, retreating vicariation). In this case, to risk of side-effects or of any other undesirable effect on other organs and systems during therapy is reduced to a minimum. In this way, the concept of vicariation has not only a biological, immediately attached to the dynamic of the disease, meaning but it also implies the facilitation in the understanding (by the physician, as well as by the patient) of the direction to which we have

to “open” the disease during treatment and the way in which we may optimize regulatory processes (functions) in the patient’s organism.

THE EVOLUTION OF ELECTROACUPUNCTURE METHODS OF DIAGNOSIS

All electroacupuncture methods that were developed in 20th century have their origins in the classical Chinese acupuncturing. It is precisely the understanding of the Eastern principles of medicine, that the energy-information system of interaction of cells, organs and systems of the organism is carried out with the assistance of the system of meridians and of the points of acupuncture, that served as the point of reference of in-depth research of European medicine.



Йошихиро Накатани

In 1956, Japanese scientist Yoshiro Nakatani proposed his own method for the diagnosis of meridians with the aid of a device. After long-year research on the electric resistance of biologically active points on skin, he drew conclusions on the relation that characterizes this index (i.e. electric resistance) and the functional situation of the organs with which it is linked. In the projection area of China’s classic points for acupuncture, Nakatani defined those spots that have lower resistance than the skin that surrounds them. These points were on the lines of increased electric conductance and their position coincided with the direction of the meridians of acupuncture. This is why the method was called **Ryodoraku** (after the Japanese: ryo=good, do=(electric)conductance, raku=line). Moreover, Nakatani discovered the law governing the change of electric resistance at the representative points (for which the peripheral group of points is used, comprised mainly by correspondent points) and the energy situation of the meridians and respectively of the organ(s) with which they are

associated. Nakatani made a quite convenient and representative diagnostic map, user-friendly for physicians embracing Chinese acupuncture. Later, several researchers proposed numerous logarithms for the calculation of Nakatani measurements that made possible the interpretation of the results from the point of view of European physicians.

After having passed several stages of changes, *Ryodoraku* method is presently one of the fastest and most convenient methods in the functional assessment of the patient's situation.

Germany is the country in which one of the most widespread methods of electroacupuncture was discovered, i.e. R. Voll's method (**EAV**). Reinhold Voll was born on February 17 1909 in Berlin, studying in Tübingen University from 1930 to 1935 and then pursued his major at the Tropical Medicine Institute. Already from 1939 he applied electroacupuncture in his practice. In 1953, in association with the engineer F. Werner he began the manufacturing of the first device on his method. In 1955 R. Voll founded the "KUF electroacupuncture Working Group", which was later renamed into "Global Electropuncture Union" and then into "Global Electropuncture Union according to R. Voll".

Voll's adversaries under the leadership of Schmidt and Phill followed their own course resulting in the creation in 1968 of the independent "Experimental Community of Bioelectronic functional diagnostics and therapy" or BFD. The basic difference between BFD's and Voll's supporters was as follows: In BFD the most important criterion (for diagnosis) is not considered to be the absolute indication-value that we take during measurement, but the dynamic with which this value changes after applying charge. Later, the supporters of the two methods followed separate courses.

R. Voll's most basic and most valuable contribution in electroacupuncture was the discovery of a phenomenon he made in 1954, when during research and electroacupuncture tests together with M. Glazer-Tiurk, they suddenly noticed that medication that were found close to the acupuncture points can change their electric parameters substantially.

The methodology that was suggested by H. Simmel in 1978 is based totally on the aforementioned phenomenon and was named ***Vegetative Resonance***

Test or VEGA-TEST after the name of “VEGA” corporation that manufactured the device first, based on this methodology.

Based on and applying all valuable insights contained in the works of his predecessors, H. Simmel reduced the number of working points up to a single point and shaped the manner of measurement differently by “closing into ampullas” the organs, which up to that point were measured through the points. With the new methodology he applied, measurements are not conducted at several acupuncture points and the values of these measurements are not taken into consideration unless the sole source of information was a “reproduction” spot on which the “products-indicators” are tested.

Being a restless mind, H. Simmel discovered in collaboration with Ronald Eichhorn in mid-1990s the Electrophysiological end-point diagnosis. This method is completely different from all other methods of electroacupuncture at the following: in the measurement of the parameters of the point no charging with direct current is used, but the self-dynamic of the point is determined. However, it has been proven that with this measurement technique the diagnostic test for the appropriateness of the product becomes more difficult. This is why Dr. Simmel retries the application of the “Vega Test”, adding to the diagnostic chain the so-called ***absorber*** (which included a mixture of mineral substances) that aimed at the reduction of noises at the background. This methodology was named “***Autonomous resonance test***”.

Using all the experience of the previous years, Simmel moves even further and in 2000 he creates the “Photonic test”, a method of resonance that, according to the creator’s opinion, allows for making diagnosis in much greater depth, “up to the resonance levels of DNA cellular nucleus”. This new method is applied with the aid of a device that uses a perfected absorber, as well as a possibility of highlighting the measurement point with the aid of small currents (300-900 nanoampere). According to Simmel, this method provides the possibility of conducting a “multi-layer” diagnosis on the four diagnostic resonance levels.

The four diagnostic resonance levels according to H. Simmel:

1st resonance level: blood, lymph, the organs, systems of organs.

2nd resonance level: the cell (along with the cellular membrane, protoplasm, cellular organelles and mitochondrial DNA).

3rd resonance level: the cell nucleus with the external DNA nucleus part (at the exterior of the double helix).

4th resonance level: the cell nucleus with the internal DNA nucleus part (at the interior of the double helix).

During the elaboration of his method, Simmel formulated the “**chimney principle**”, which states that “the chimney has to be open always upwards (to the outside)”. This means that for the therapy of each of the following levels, the recovery of the previous one (that closer to the surface) has to be completed, i.e. for the toxins to be removed the channel to the outside has to be released.

In case the therapy is conducted in this way, i.e. the external level is initially released and only then the subsequent ones follow, the therapy conducted quite mildly without further implications. In addition, if one examines this approach more carefully, it becomes absolutely clear that this principle corresponds to “Görring’s rule”, as well as to the homotoxicosis theory, of course, serving in this way as an additional criterion for the control of therapy for the physician who is aware of this methodology.

Irrespectively of the differences we described between the diagnostic techniques of Vega and photonic test, both of them rely on the same principle: the search for coordinates between products, indicators and the patient’s organism and the diagnosis with the aid of a single biologically active point.

PRINCIPLES OF ELECTROACUPUNCTURE DIAGNOSIS ACCORDING TO R. VOLL’S METHOD

All contemporary achievements and successes in the area of electromagnetic therapy are based on R. Voll’s fundamental works, who observed the electromagnetic nature of the phenomena at the points of acupuncture. These successes are directly associated in Voll devices with the precision of diagnosis on biologically active points (BAP). These devices have a special diagnostic scale of 100 subdivisions (conventional units or c.u.), with

the aid of which the malfunctioning character of several organs and tissues of the organism is assessed.

The principle and the method of diagnosis of these devices is described in many books and manuals. However, since the Voll device is the basic diagnostic bloc in the machinery that we manufacture for diagnosis and electromagnetic therapy, we have considered it appropriate to present one more time the sequence of diagnostic techniques.

We should emphasize that, among the main diagnostic criteria used for the interpretation of the results of the measurements of the BAP electric parameters, it is necessary to distinguish the following indicators (see the figure):

- The maximum divergence of the needle,
- The minimum (pre-adjusted) indication of the needle,
- The size of the needle's fall,
- The speed of the needle's move.



(Figure: Figure of diagnostic criteria of divergences of the needle of o Voll device on BAP stimulation with electric current.)

The first criterion characterizes the type of the reaction of interconnected biologically active points of the organs and tissues to the stimulation with electric current, which is depicted with the determined position of the needle in the diagnostic device. The maximum divergence of the needle in the measurement of BAP is conventionally taken at the EAV as the maximum value of BAP measurement.

The interpretation of the results of the measurement of BAP electric parameters is presented in Table 5.

Table 5.

The interpretation of the results of the measurement of BAP electric parameters

Size (conventional units)	Interpretation
100	Extensive acute inflammatory process
from 90 to 99	Acute or catarrhal inflammatory process
from 82 to 89	Subacute, focal or local inflammatory process
from 66 to 81	Pre-pathological disturbance of the function of an organ or tissues
from 52 to 65	Zone of normal intensity in the function of an organ or tissues
50 \pm 1	“Ideal” situation
from 42 to 48	Initial stage of dystrophic process, disturbances in the metabolism
from 32 to 41	Progressive dystrophic process
from 22 to 31	Dystrophic process with partial atrophy of cell structures of an organ and tissues
from 0 to 21	Full atrophy or malignant mutations of cell structures of the organ and tissues

The second indicator for the interpretation of the results of BAP measurements is the “needle’s fall” - NF of the device, which takes place at the opposite trend in relation to the maximum value that has been achieved with direction to zero. The indication (value) that the needle registers after

the fall is taken as the minimum value of BAP measurements. The shifts of the needle at the device are accompanied at the same time with a respectively changing sound signal.

This indicator certifies the development of functional or organic changes due to cellular degeneration in the organs and tissues of the organism associated with the specified BAP.

In case no processes of cellular degeneration occur, the size of the fall of the needle equals to zero.

The fall of the needle above 5 units indicates a pathological situation in the organs.

Hence, in acute inflammatory processes with apparent cellular degeneration NF's size may rise to 20 units, in a cellular disorder of mild form to 10-20 units, in disturbances of the vegetative system or of the neurohormonal function, as well as of autoimmune inflammatory processes to 5-10 units.

In case the fall of the needle is above 20 c.u., then this indicates a developing pathological process with irreversible cellular degeneration which causes fatty or other incarnations of the respective organ.

It necessary to point that the speed with which the needle falls has an independent diagnostic importance that characterizes the stabilization and adjustment possibilities of the organism's reactions.

The abrupt fall of the needle (in 1-2 sec.) from the initial indication with direction to zero is characteristic for old acute toxic offences accompanied with rapid weakening of stabilization possibilities and an apparent cellular degeneration.

A slow fall of the needle (of duration of 10 seconds or more) is usually observed in cases of chronic inflammations with weak symptoms.

The third indicator for the interpretation of BAP measurement results is the more general dynamic that the needle has. The speed with which the needle rises is of great importance for the proper diagnosis. The normal time for the rise of the needle is ~3sec. In case this time is faster, i.e. 1-2 sec., this certifies the toxic offence of the organism. This may be due to the reception of strong stimulating medication as well. In case the rise of the needle is slower,

this certifies fatigue or that the patient has received tranquilizers, pain-killers or hypnotic products.

Medication appropriateness test (MAT)

During the research he performed, Dr. R. Voll discovered that the situation of an active point changes not only after conducting therapeutical action, but also when the patient keeps the medication in his/her hands inside its package. During the patient's contact with the medication (homeopathic, allopathic), the change of the active point (either towards the normal or towards the pathological side) corresponded to the clinical action of this medicine. This provided the possibility, on the basis of the resistance of the respective active points, to determine both the kind and the dosing of the medication we need for the specific patient.

For the proof of the existence of interaction from distance between the product and the human organism, on which the MAT method is also based, several pieces of research have already been published. (C. Edler, V.Pongrats, 1994, E. Hartman, J.Gutz, F.K.Langer, 1992 et al.) that have indicated that the principle in the action of several products, particularly of the homeopathic ones, is the low Electromagnetic Field.

The essence of the MAT, from a bionatural point of view, lies in the interaction of two subjects, each of which has its own exclusive range of wave radiation. The contact of the two ranges (of the biological system and of the examined substance through the circuit of the device) causes their interaction: when the wave characteristics of the examined substance and of the biological system coincide, we have the phenomenon of resonance (resonance correspondence), which appears with the change in the function of that system (something that affects the electric conductance of Active Points) and, the other way round, the reaction of the organism could be zero in case the characteristics of the two wave ranges are not identical.

The reaction of BAP with resonance to a weak electromagnetic field of the medication is interpreted by researchers by the fact that in the different pathologies the organ is not sufficed with certain concrete special frequencies and by making the proper choice in the product (mainly homeopathic or

isopathic), this lack of frequencies is compensated up to an extent, something that also causes the normalization of the organ's situation (L.Koning, R.M.Kullmer, 1988).

The experimental confirmation of the possibility of wave effect with the use of pharmaceutical substances (homeopathic, allopathic, isopathic) at the BAP and through it at the organs and systems of the human organism with which it is associated has served as the foundation of the methods of resonance and wave diagnosis and therapy.

The peculiarity that characterises the MAT lies in the fact that with the action of pharmaceutical substances from distance, literally within a few seconds, we receive the organism's response to this effect and this reaction (of the organism) allows us to assess and predict its consequences to the patient, taking into consideration his/her psychic-emotional and morpho-physiological situation.

Principles of the VRT test.

The basic principle of the VRT method is the principle of the biological resonance which appears (or does not appear) between the "product -signifier" (homeopathic, information product) and the patient's organ as a whole or some of its partial subsystems: organs, systems of organs, structures of tissues, etc. The entire methodology relies on the phenomenon of the MAT, which was discovered by Voll.

The most widely circulated theory that interprets this phenomenon is the theory for the electromagnetic nature of the interaction between living and dead (pharmaceutical) nature. During the coincidence of the frequencies, resonance occurs, which in turn causes changes in the organism and first of all reaction of the vegetative system. In case there is no resonance, no vegetative response from the side of the organism occurs as well. We can observe the resonance between the homeopathic product and the organism by the change in the vegetative functions, particularly with the aid of skin or complexion resistance. Complexion resistance depends from the characteristics of the skin: moisture, acidity, quantity of disposed fat, sweat. All these are regulated with the strengthening of the parasympathetic part of the Vegetative System (i.e.

the nutritional function of the vegetative). During the introduction of the examined product (which causes the phenomenon of resonance to the organism), changes at the field of measurement will be observed at the part of the vegetative nerve system, manifested among other things with the increase in the complexion resistance, which in turn can be observed with the measurement device and the needle's fall. In this way, the needle's fall (MAT) is the increase in skin resistance that has emerged due to change in the vegetative function as a response to the (resonance) frequencies of the tested products.

Preconditions for conducting the Vega -Test

For the successful conduct of the Vega Test a series of preconditions have to be met.

Demands to the patient

Preferably, the patient should not be hungry at the moment of the diagnosis. The best time for the examination is 1-1.5 hour after lunch. No alcohol should be consumed for 2-3 full days before the examination. For 24 hours before the examination, the patient is forbidden to drink coffee. No chocolate, citrus or chewing gums should be consumed right before the examination.

The reception of medication that the patient can stop receiving without repercussions has to stop 24 hours before. The patient has to carry with him all the products that he/she receives in order to have their efficiency and persistence examined. Medication of vital importance received by the patient for a long period do not affect the diagnosis significantly (except for hormonal products), but the physician has to be informed before the meeting which products, in what doses and during which hours of the day they are taken.

The day before the diagnostic meeting, contact with chemically active substances (varnishes, colours, thinners) has to be set aside. It is also better to avoid smoking for 24 hours before the meeting (in case this is not a stress factor for the patient).

It is better if the clothes are made of natural materials, whereas it is necessary to remove from our body all jewellery and medal objects before the diagnosis. We should also deactivate cell phones and remove them to a distance of up to 1.5 m.

The best time for the examination is the first half of the day, when the patient and the physician have more energy. However, on the other hand, we should also take into consideration the biorhythms of the patient. It is preferable to conduct the second examination at the same time we conducted the first one.

Requirements to the physician.

In the first place, the physician himself/herself has to be healthy or at least not suffer by any pathology of a acute form.

The doctor must not exaggerate with the make-up and the perfumes he/she uses. Before the examination, he/she must remove all jewellery and medal objects from his/her body.

The clothes of the doctor have to be made from natural objects so that no electrostatic electricity may be caused by them. The cell phone has to be deactivated or removed at a distance up to 1.5 m.

The physician has to standardize his/her moves to the maximum and to shape his/her personal “approach” in order to secure stable repetition of the results of the measurements.

The ideal is that the doctor should have a personal set of devices for conducting the diagnosis.

At the examination place (infirmary) other people should not be present (with the exception of parents of children).

Requirements to the infirmary.

The temperature of the place has to be 21-22 °C.

There should not be physiotherapy or X-ray devices inside the infirmary. No use should be made of household devices: sources of electromagnetic

radiation (microwave ovens, ionizers, fridges, TV sets, etc.) inside the infirmary.

The workplace has to be at least 15-16 m².

The distance between the diagnostic equipment and the personal computer (tower) has to be at least 0.5 m., whereas the distance between the patient and the screen and tower of the computer : 1-1.5 m.

The arrangement and more generally the atmosphere of the place has to be neutral so that the vegetative system be not provoked.

The covers of tables and floors of the space must not cause static electricity.

Light sources, especially daylight lamps, have to be removed from the equipment at a distance at least of 1.5 m and to cause no overheating of the devices.

It is necessary to clean regularly the electrodes with a cleaner, after we have used them for a Vega -test (they must not be toxic), whereas after each meeting it is necessary to clean it by alcohol.

Technique for conducting the Vega - test.

The Vega - test is conducted in a sole point of reproduction. More convenient points are those found outside Voll's meridians, in the mid-line of the palm of the first phalanx of the fingers. For the selection of the point, we have to pay attention to the situation of the skin at the measurement area: i.e. in case there are injuries, scars, open wounds etc., we must necessarily choose another point for measurement. The complexion has to be clean, healthy, without marks of inflammation or mechanic offence. The use of any therapeutical or cosmetic creams and moistures before diagnosis is not allowed. Excessively wet skin has to be dried with a tissue, whereas dried skin has to be moistured. We must not use different gels so as not to differentiate the electrolyte characteristics of the skin.

As experience shows, any point may be chosen for the measurements as long as it is "reproducible", i.e. the value that it has in the second measurement has to be at the same level as the first one; in other words, according to R. Voll: it is the point where there is no needle's fall.

In case in the following pressures on the spot no return to the original result is observed, then this certifies the disorder of the organs or systems associated with that point. This point cannot be used for Vega-test measurements.

In the Vega-test method, a special measurement technique is used:

a) The pressure (we exert) to the sensory bar has to be the same in all measurements, with the same angle and the pressure cannot exceed 100-150 gr,

b) The technique of pumping is used. The technique lies in the following: after achieving the maximum size-value at the point we measure (e.g. 40 conventional units), pressure at the bar is reduced without removing the terminal of the bar (the active electrode) from the point. In this way, the values of the indications at the scale of the device are reduced. Subsequently, pressure at the bar is gradually increased (pumping). In case the original price, e.g. 40 units, is achieved again after this measurement, then the point is again considered to have been reproducible; in case it does not, this indicates the existence of pathology of the organs or systems associated with the point that we measure. A point like this is regarded as non-reproducible and cannot be used for measurements.

The duration of the “pumping” cannot exceed 3 sec. The pumping has to be quite regular and steady without sudden moves and bouncings in the pressure we exert. In case excessively strong or continuous pressure is exerted during pumping, then this point might be rendered inappropriate for the measurement.

c) Broadening of the scale. To increase the method’s measuring capacity, a broadening of the scale of measurement up to 80 units on the Vega-test diagnostic device is used, irrespectively of the value we originally took for the reproductive point. The broadening of the scale takes place automatically by pressing the button on the bar (of the active electrode) during measurement. In the scale of the measurement device, the original value is broadened up to 80 units. The value of 80 units is the original situation of the point during diagnosis. Subsequent observation of the needle during Vega-test is conducted precisely on the basis of the indicator of 80 units.

The purpose of the Vega-test is the indication of a set of homeopathic products (out of the collector's existing medication database) that cause vegetative resonance to the organism. The different algorithms of diagnosis with the aid of the Vega-test basically differ only in the constitution of the examined products.

In contrast to other methods of electroacupuncture diagnosis, the Vega-test provides the possibility to move from the general to the particular. Initially, an indication for the existence of certain disorders in specific organs or systems is received, or an indication for the effect of certain unfavourable factors: radioactive radiation, electromagnetic dynamic fields, infectious units and other exogenous effects, according to the "yes-no" principle.

In "yes", (i.e. when we have positive result) we may define:

The **where?** (which organ or system has been infected by an unfavourable factor), which is determined with the test of organ-specified products.

The **what?** (the nosological form of the disease) is determined with the aid of nosodes.

The **with what?** and **how?** we may optimally eliminate the pathology with the use of different methods of therapy.

This kind of approach provides us with the possibility to reduce substantially the duration of diagnosis, to select the optimal methods and strategies for therapy and to secure the best possible control of the therapy we perform.

The Vega-test method is executed through:

The immediate test,

The test "by filter",

The constitution of a diagnostic resonance chain (circuit).

Immediate test is called the test in which a single homeopathic product out of the collector's medication database is found in the chain of measurements.

Order for conducting the immediate test (without a filter)

1. The selected homeopathic product out of the collector's database ("indicator") is activated by the collector at the field of measurement.

2. The presence or absence of the vegetative resonance between the organism and the product, which is expressed with the change of the measured size, is determined.

The presence of resonance with the selected product is recorded through the needle's fall at the device below 80 units. In this case, the result of the test is regarded as positive (answer "yes"). In case the "indicator" does not cause the fall of the needle below the original position, the answer is negative ("no").

For example, the product *Interferon D30* is an indication of acute viral process in the organism. The fall of the needle below 80 units informs us for the existence in the patient of *Interferon D30* acute viral infection.

Subsequently, the examined product (the indicator) may be used as a "filter". This means that, without exempting it from the test, we may pose the next question (i.e. to activate the next product).

The test "by filter"

One basic technique in conducting the Vega-test is the application of the principle of filtering when two examined products (test products) are successively introduced in the field of measurement. The test is conducted as follows: the test product (the so-called "filter") provides the reduction of the original value, whereas the next test product provides the return of the value to the original 80 units of the scale.

For instance, the first product *Interferon D30* causes a fall of the needle below 80 units ("yes" answer), something which informs us on the existence of acute viral infection in the patient. In order to clarify which virus caused the infection, we have to select out of the list of viruses to most probable nosode product according to the clinical symptoms. In case during the activation of the second product in the chain, **Grip D6** for instance, the needle rises up to 80 units, returning thus to its original position (i.e. we have a resonance), this serves a positive answer ("yes"). Based on the results of the test, we may conclude the following: the acute viral process was caused by the flu virus.

Interferon D30↓ + ***Gripp D6***↑

In case the needle does not return to 80 units, then the test is negative (“no” answer) and we may exclude this stimulator as the cause of the acute viral infection.

Constitution of diagnostic resonance chains

The logical chains for the diagnosis of the Vega-test are created along with the successive activation of the products in the chain. For this reason, they channel the collector in the direction of the required test. The sequence of the indicators (products) is such that for each separate product-indicator, all the previous ones create a filter that has a common (vegetative) resonance with them that is called resonance chain. With the aid of the resonance chain in terms of the Vega-test we may indicate and efficiently describe practically (for the therapy that will follow) any nosology whatsoever.

The chain of the examination can be created both by starting from the question “what?” as well by starting from the question “where?”.

For example, ***Conium D30*** is an indication of the presence of benign tumour in the organism and in case the physician poses this indication first, he/she poses the question of “what?”. In case of a positive answer, the needle will fall, i.e. we will have a decrease in relation to the original price. Then, by changing the organic products we may search where exactly this process is located - the “where” question. The organ-product that causes the return of the measured values to the original high level is the one to indicate the organ that was offended with that process at the indicator in which it is filtered. For instance, by making selections we find that the organic product ***Mamma (dextra)*** (right mastoid gland) returns the indications of the diagnostic device to the original position. This testifies the existence of a benign process at the mastoid gland. To make the diagnosis more accurate, we continue to draw the chain of questions by selecting pathogenic nosodes. In this way, it is clarified exactly which benign process occurs at the mastoid gland.

When we activate the third product, for example ***Fibroadenom Mamma***, the positive response will be observed by the fall of the needle below the

original value. We may draw the conclusion that the patient has a fibroadenoma of the right breast.

Conium D30↓ + ***Mamma (dextra)*** ↑ + ***Fibroadenom Mamma***↓

We may keep expanding this chain until the point where the cause of the process will not be apparent.

In case all searching starts with the question “where?”, then by selecting the organ-specific products we find the organ that has been offended and then we filter with its assistance the indications of the different problems.

For instance, the diagnostic chain: Stomach- stomach ulcer - *Campylobacter pylori*:

Ventriculus↓ + ***Ulcus ventriculi***↑ + ***Campylobacter pylori Sdf.Nos***↓

allows us to conclude: stomach ulcer due to campylobacter.

Subsequently, after we have responded to the “what?” and “where?”, we may select the stage of therapy under the perspective of the indications we received, finding thus the optimal step for the resolution of the problem at hand.

Conducting diagnosis with the Vega-test presupposes the signification of the constitutive links of the pathogenesis to each patient separately.

The products that grant a general overview of the situation of separate systems in relation to their significance to the organism as a whole are called ***integrative indicators***. To these belong the “Biological Indicators”, the “Photonic Indicators” and the “Adaptation reserves”. In an analogous way, indicators of the intensity of the immune, vegetative and endocrinal system can also be used, as well as the existence, the degree and the type of psychological charges. The level of integrative indicators will also help us appreciate the situation of a patient properly, to select treatment adjusted to the patient’s needs and finally to make therapy as efficient and safe as possible.

In the resonance test both certain specific indicators of resonance as well as series of potentionings of several substances, are used; the latter are the so-called diagnostic resonance scales that allow us, in principle, to determine the stages the size etc. of different processes. With the **diagnostic resonance**

scale we may receive information both for the organism as a whole, as well as for a specific structure of it, according to the way of application. Thus, for instance, by testing the biological resonance scale of the indicators (several dilutions of mesenchyme) immediately, we may determine the general biological indicators of the organism, whereas with the filtering of the same scale through the organ-specific product the diagnosis of special biological indicators, i.e. of biological indicators of a specific organ, is possible.

In case the purpose of a diagnosis is a specific direction, situation (complaint) or syndrome, this may serve as the defining moment, the original point of the algorithm for conducting the thematic diagnose. According to the basic directory question or target of the examination, the specific diagnostic algorithm (sequence) of the test is selected.

In this case, the situation or syndrome model is used as a starting point. After conducting the initial stages, the collector chooses the required indicator for the situation or syndrome. The following (thematic) examination is conducted within the (circumscribed by the model) range found at the beginning of the chain. In other words, resonance will appear in those products that have a causal - consequential relation (with the model).

All information we receive during the test allows us to select different ways of therapy: homeopathic and allopathic, as well as products, their doses and their dilutions. These are necessary for the gradual, smooth correction of all disturbances highlighted, taking into consideration the backup possibilities of the organism itself. Using the Vega-test enables us to optimize the selection of the endogenous and the exogenous Bioresonance therapy and to appreciate its results in a better light.

According to studies, the precision in the diagnosis through the Vega-test rose above 85% in average. In Table 6. the comparative results of diagnosis through Vega and EAV test methods in organ and system diseases are presented.

Table 6.

Precision in diagnosis of Vega-test and EAV methods.

Organ and system diseases	Vega test	EAV
Diseases of the respiratory system	87,3%	67,1%

Diseases of the Central and peripheral nerve systems	80,2%	75,4%
Diseases of the cardiovascular system	89,7%	74,3%
Diseases of the kidneys and of the urological system	88,5%	65,8%
Diseases of the musculoskeletal system	86,3%	71,5%
Skin diseases	85,1%	62,3%
Diseases of the genital system	87,8%	66,7%
Diseases of the endocrinal system	84,8%	72,5%
Diseases of the blood and of the lymphatic system	87,9%	71,2%
Allergies	89,3%	68,2%

BIORESONANCE THERAPY (BRT)

BRT is the restoration of diseases through endogenous and/or exogenous electromagnetic vibration of low intensity and of a rigorously determined form and frequency that cause a bioresonant response in the organism.

From a natural point of view, resonance (from Latin: resono - respond, reply) is a phenomenon of an abrupt increase in the amplitude of vibrations that was caused by the effect of an own (resonant) frequency. The effect is possible not only at the level of cells, but to those of an organ, system of organs and of the entire organism as well. The basic concept in the application of the resonance in medicine lies in the fact that with the proper choice of frequency and form of therapeutical (electromagnetic) effect we may strengthen the normal (natural) and weaken the pathological vibrations inside the human organism. In this way, the Bioresonance effect may lead both to the neutralization of pathological and to the restoration of the normal vibrations that have been disturbed in pathological situations.

Two basic kinds of Bioresonance therapy are distinguished:

a) The endogenous BRT. This is the therapy through electromagnetic self-vibrations of the human organism itself after their specialised processing.

b) The exogenous BRT. This is the therapy with external items with which separate organs and systems of the human organism come to resonance, as is the case, for instance, with the electromagnetic fields that the devices of exogenous Bioresonance therapy emit.

Physical principles of BRT

The external natural factors that affect humans, both natural and artificial, according to the kind of energy and the type of the carrier, can be separated in six groups:

- Electromagnetic radiation,
- Electric currents
- Electric fields,
- Magnetic fields,
- Mechanical factors,
- Thermal factors,

In case we want to select one factor for the informational effect to the human with a predetermined purpose, it is preferable that this factor should have the following properties:

- Uniformity, i.e. the use of a determined, restricted set of means for the achievement of different targets.
- Maximization, i.e. the maximum possible natural velocity for the circulation in different environments.
- Maximum range of action.

We may clearly say that only electromagnetic radiation responds to all the previous preconditions.

Great precision, the wide range of action during the stimulation and composition of the information, the possibility is short time-spans (of the order of minutes or hours) to create great changes in the internal environment of the organism confirm the indisputable choice of electromagnetic radiation for the informational effect. The management of the composition of the information through the targeted stimulation of a biosystem with the participation of the electromagnetic radiation can affect the metabolism, the psychic situation and behavioural reactions of the person.

During the use of electromagnetic radiation as an informational wave factor, it is necessary that the following issues are properly resolved:

Well-supported choice of the wave length of the electromagnetic radiation.

Definition of the parameters of the effect we will apply (amplitude, frequency)

Definition of the energy radiation grade and of energy exposition.

On the basis of the above, we may formulate **the principle of the informational-wave effect**: the achievement of the required result through the effect of an external informational wave effect depends on the resonance between the rhythms of the factor and of the respective functional system, or (it depends) from the stable result that the vibrations of a determined rhythm of the factor (under optimal parameters) cause to a certain functional system of the human.

To put it in simpler terms, in order to achieve a positive result, the informational-wave effect has to:

- Be synchronized with the rhythms of the respective system of the organism,
- Have optimal energy parameters accepted by the organism.

Electromagnetic vibrations are associated with the existence of protons, electrons and minerals. Moreover, they also transfer information. In the past, it was believed that information is carried in the organism from the source to the receptor solely through hormonal and nervous routes. Nowadays, this view is considered to be obsolete.

Nerve fibres and the liquids of the organism (blood, lymph) transfer information of kinetic or sensory stimulation and of biochemical elements that participate in the catabolism and the anabolism of fibers.

Based on the view that it is not possible for a living organism to exchange information with the external environment directly and that it is necessary to compose the information (collection of information for the preparation of response), the conclusion arises that there is a time period from the moment of the effect of an externally informational factor to the respective reaction of the organism (A.M. Hazen, 1994). As far as electromagnetic reaction to the human organism is concerned, this period equals with some minutes up to a few hours, whereas for a pharmaceutical and a chemotherapeutical effect, it equals with some days up to months.

In this way, the informational effect on the human organism with the aid of an external electromagnetic field has a series of advantages in relation to the action of chemical factors.

Principles of bioresonance therapy

For each therapy to be successful, it has to respond to a few basic principles, and particularly to the following:

Therapy has to be total

Practically this means that each organism is a complex self-regulated system and by any effect on this system many anatomical, functional, physical-bodily and pathological interactions are involved. For example, the immune system, the endocrinal system as well as other informational and regulatory systems have to be taken into consideration in each therapy. Any therapy that activates the Bioresonance mechanisms is precisely that total approach in therapy because it is only this one that activates the self-regulation processes of the organism itself and thus does not coerce and possibly “overload” the organism with action algorithms that are unnatural and intolerable to it.

Therapy has to be to the cause.

The management mechanisms of the organism are found in different hierarchical levels of the organism, in which the higher ones administrate the lower ones. The visible symptoms (patient’s complaints) are determined, in principle, with the disturbance of the lower rings; hence, action to it will not infer any substantial results. This approach in medicine is called symptomatic, i.e. it removes only the symptom and does not incur a stable result. The actual cause lies, in principle, in some one of the higher levels of management, according to the situation. The higher the mechanism on which the therapy acts, the clearer and more multiply positive result we obtain.

Therapy has to be personal

The higher the level (in the hierarchy of the regulatory mechanisms) on which therapy aims, the more personal this therapy has to be. Indeed, in case we act on a level of syndromes, it becomes clear that our “compass” is fully taken for granted, whereas the higher the level of our therapy, the more multisided and consequently the more personal this therapy has to be as well. In this way, it has to be made clear that any therapy that is in a position to cause the phenomenon of Bioresonance to the organism is by definition a personal form of therapy.

Therapy has to depend on the phenomenon of regulation

Health or disease will always depend on the capacity of the organism itself to activate its regulatory mechanisms. Rehabilitation can be achieved only by the restoration of the regulative capacity of the organism itself and in this lays the primary purpose of each therapy. A properly selected and executed therapy satisfies fully the above preconditions. It is always a total, causal, personal and regulative function. Moreover, all these principles are fundamental in the so-called holistic approach to the human person, which is known in medicine from the earliest times. Particular areas applying this approach are the traditional ways of therapy, such as homeopathy, acupuncture and therapies relying on them that emerged afterwards.

Physical properties of biological systems

It is known that biochemical reactions, all of them being manifestations of the vitality of matter, have to do with the transfer of electrically charged particles: ions, electrons, in other words with electric current. Spectroscopic analysis shows that in each molecular structure corresponds a single combination of frequencies, which in turn corresponds to the aggregate of all frequencies of the chemical unions. And within these, the frequencies that correspond to the vital functions of the organism overlap.

The passive electronic properties of the biological tissues are characterized by the complex resistance, the size of which is determined by

the capacity and the active conductance with the respective inductivity of the tissues (R. S. Ibrahimov, 1990). The active coefficient of conductance in low frequencies is basically determined from the quantity and the electrolyte constitution of the intercellular liquid, whereas in high frequencies the additional contribution is caused by the electrical conductance of the cells. From the moment the resistance of the cells is successively activated according to the capacity of the cellular membrane, we observe the phenomenon of the dispersion of the frequencies to the conductance of the biological tissues. Having high trans-electrical properties and small thickness, the interlayer fatty membranes are characterized by high special electrical conductance. A great portion of the charge capacity of the membranes and consequently the capacity properties of the biological tissues are determined by the significant capacity of polarization of the membrane's trans-electricity, which depends on its relative trans-electrical permeability. In high frequencies, the polarization mechanisms are deactivated through a deceleration of the time of relaxation; this is why with an increase in the frequency the capacity of the tissues is decreased, as is also the case in the increase in trans-electrical permeability.

In the low frequencies zone, the complex resistance of tissues is determined, in principle, by their enduring properties. A tissue with high electric conductance is the nerve tissue. In the middle frequencies zone, those tissues are included whose electrical properties are determined both by resistance properties and by capacity properties. In the zone of high frequencies, the electrical properties of the tissues have a capacious character (membranes, fats). The slow polarization mechanism of the frequencies in this area can cause important trans-electrical losses to the tissues (heating).

We may represent the living cell in the form of a vibration circuit with electrical capacity and resistance; in fact, the capacity (membrane) is determined by reactions of free radicals and of the system of anti-oxide defense, whereas resistance (is determined) by the enzymatic oxidation. The electric circuit of vibrations has inductivity, i.e. the capacity to stimulate electric current to another circuit thanks to its magnetic momentum. The production of magnetic field pulses from units to decades of kHz is a characteristic feature of the normal function of the different human organs (P.Kneppo, L.Titomir, 1989).

In the form of the vibration circuit, we may represent not only one cell, but also higher levels of organization of living organisms: tissues and organs with different routes of glucose oxidation, organ systems and the entire organism as a whole as an inductively balanced system - circuit of vibrations. An organ like the liver, for instance, includes two routes of glucose oxidation in equal analogies, something that renders it crucial in the capacity regulation and inductivity system of the organism.

The circulatory system is a cluster of closed tubes from the bronchi of the capillaries to the systemic and pulmonary circulation of the heart. The different complex resistance of the venous and arterial blood creates the conditions for the interaction of the organs. The electrical properties of the blood are determined by the existing quantity of hemoshperine, oxygen and other unions in it, the composition of proteins - electrolytes, as well as from the speed of the blood flow. The supplementation of oxygen, which has the property of the receiver of electrons, to the iron atom of haemin is accompanied with the shift of the electrical capacity both of the oxidized iron and of and of the nitrogen sets attached to it. In other words, it is accompanied with the creation of electric current in close circuit with the respective stimulation of a magnetic field (M. S. Marinov, R. H. Rouzneva, 1990).

The electromagnetic field, as examined in terms of classis electrodynamics, unifies the function of the entire organism, restoring and preserving the specialization of the different tissues; whereas, on the other hand, the circulatory system serves as the horizon according to which the regulation takes place. With an approach like this, the holistic method of therapy becomes understood and necessary.

The energy that Ancient Chinese called Qi that circulating in blood becomes completely realistic and finds its natural correspondent. In an approach like this, it becomes intelligible the reason why with an increase in the toxicity of the surroundings the circulatory system is the first one that suffers, since it receives the effects of all organs and tissues.

In the past, it was believed that information from the source to the receptor is transferred only through hormonal and neuronal routes. Nowadays, this view is obsolete. Nerve fibres and the liquids of the organism (blood,

lymph) transfer information of kinetic or sensory stimulation, biochemical elements participating in the catabolism and anabolism of the fibers. But how exactly organs, tissues and cells communicate with each other? V. A. Popp showed that the huge mass of information found within the organism can be transferred only through radiation and vibrations, the speed of which equals the speed of light. In this way, there can be, for instance, an informational system responsible for the preservation of balance between cells that are necrosed and those that replace them. And we are talking not for some thousands, but for 7-10 millions of cells per second that have to be renewed. The nerve system and the liquids of the organism are too slow to resolve this problem. In case this information can be transferred only by electromagnetic radiation, then a transmitter and a receiver coexisting at the DNA double helix at the cell nucleus are required (Popp, Vincent et al.).

In this way, we have one more piece of proof of the significance of electromagnetic vibrations as carriers of information for all functions in a living organism. These vibrations are responsible for all the processes of metabolism, development and necrosis, the creation of enzymes and thermal regulation, the conscious and unconscious reception of information. And all these, to call it properly, are not but some of these processes. In reality, the volume of information for the processing taking place at the cell per second is that big that, in case we could write it down, its reading would take us about 100 years (Popp). Electromagnetic vibrations as carriers of information apparently prevail vis-à-vis the biochemical processes. Originally there has to be information. Only after this one may all other processes of response or non-response follow, which become feasible thanks to the existence of the signals of electromagnetic vibrations and are activated (the processes) with their assistance.

Action mechanism of natural factors.

We may describe the action mechanism of natural factors in the human organism as follows. In the first place, the absorption of energy (of the factor) by the organism as a natural body takes place. In this phase, all processes are

subject to laws of physics. By them, the depth of the offence of the factor within the organism is determined, as well as the kind of tissues within which the absorption of energy of a greater extent takes place, the first consequences of the absorption, i.e. the creation of heat, free radicals, the stimulation of molecules etc.

Complex and less known phenomena of conversion of energy to biological process are developed in parallel with the primary, purely natural, conversion of energy at the tissues, particularly in the realm of natural factors of low energy effect. Stimulation of receivers is noted, as well as of nerves or other stimulating tissues, a change in the ordinary ions and environmental pH analogy and a creation of biologically active unions. Local differentiations in the situation of the tissues are transmitted via nervous and hormonal routes, affecting the different systems and neuro-endocrinal regulation.

In the last few years, methods based on the creation and transmission of signals of very low power that do not cause visible changes in the temperature of the tissues but yet determine the flow of information regulating the functional directions of the organism are increasingly spread and developed. The fundamental particularity of these methods is the targeted, low intensity, effect. In all the biological systems of a living organism in many diseases the physical-chemical and biochemical processes are conducted in low energy levels.

One of the working hypotheses of these methods relies on the ability of the living organism to respond selectively to the action of external electromagnetic radiation of exceptionally low energy. Additionally, the response of the organism emerges in a strictly personal therapeutical frequency, something that is recorded in clarity (cardiogram, encephalogram, magnetic scan, Voll method). One such effect causes vibrations of biologically active elements to the tissues of the brain and peripherally of the body and through a complex chain of conversions activates strong self-regulation mechanisms in the organism, with which a clearly therapeutical result is achieved. With the effect of radiation of low intensity, the cellular membranes are changed, as well as the intra-cellular elements, something that causes an increase in the post-charge activity of the substances through the membrane and the strengthening of basic bio-energy processes, i.e. low intensity radiation

has a clearly revitalizing, nutritive, analgesic and anti-inflammatory action. Moreover, it stabilizes tissue breathing and causes the activation of the hormonal and cellular immune system.

These changes in the immune system have an antiviral and an anti-microbe direction, something that can be used for the prevention and therapy of viral diseases and for the therapy of bacterial infections.

In this way, the therapy of the pathology that emerged lies in the awakening of reserves already present in the organism.

External electromagnetic radiation

Electromagnetic vibrations in the environment are created naturally and are observed in every physical-chemical process. Innovative scientists in positive sciences, physicists, biologists, physicians take for granted that electromagnetic vibrations have a prominent role in nature. Numerous phenomena in nature can be explained only by their presence.

The basic source of electromagnetic vibrations is the sun, since it emits a very wide range of electromagnetic waves, of which 6% arrives to Earth.

However, a system of organs does not respond in the same way to the entire range of electromagnetic vibrations, which represents a coercive force and has a harmonic character. On the contrary, it (the organism) will resist most of these. This will happen continually until the frequency of the power that causes the stimulation does not approach the frequency of the system's self-vibrations. In the limits of this frequency, the resistance of the pulsing system is decreased, whereas the frequency of self-vibrations becomes equal with zero. And in case there were no friction forces, which are always present in nature, then the amplitude of the vibrations would be that large that it would destroy the system. The phenomenon of the wide increase in the amplitude of the vibrations during the approach of the frequency of the stimulator to the self-frequency of the vibrations of the system is called resonance, whereas the frequency is called the resonance frequency.

It is necessary to note an important property of material bodies.

Each material body has frequencies (self-frequencies) of its self-vibrations. Under the effect of an external periodic power (stimulator) upon it

with a frequency equal to that of the self-vibrations of the body, resonance vibrations will be caused to this body.

Electromagnetic vibrations that exist in the interior of a living organism depend on the vibrations existing outside the organism only up to a certain extent. Even though self-vibrations of the organism are stimulated by the vibrations of external electromagnetic fields, subsequently they are created again in the organism in a specialized form.

It is known that the cell, the tissue, the organ, the system of organs and the organism as a whole have frequencies of self-vibrations, which are presented at Table 7.

Table 7.

Self-frequencies of vibrations of organs and systems of the human organism.

Human organs and systems	Self-frequencies of vibrations, Hz
Bronchi	32,5/46,0/76,5/86,0/92,0
Coronary heart vessels	43,5/44,0/95,5
Thymus	69,0/79,0
Hypothalamus	7,5/15,0/100,0
Pituitary, posterior	92,5/99,0
Pituitary, anterior	91,5/98,0
Eyes	72,5/64,0
Pharynx	71,5
Larynx	13,5
Muscular system	23,5/62,0/63,0
Diaphragm	91,0
Eustachian tube	27,0
Stomach	49,0/55,5/58,25/59,75/73,0
Gall bladder	63,5
Skin	6,0
Bone marrow	9,0/93,0
Lungs	72,0
Tonsils	20,5
Adrenals	52,75/53,0/53,5

Judging from the data of the Table, it can be inferred that each organ and cell have its own range of vibrations, as well as its own characteristics of these vibrations (form, kind, frequency). The support of these vibrations depends on the extent to which the stimulator of the cell, of the organ, of the tissue or of the entire organism is “well-intended” or not. In case the positive “disposition” of the stimulator has been disturbed or distorted, inappropriate pathological vibrations can emerge. In case the organism’s existing self-regulation and consolidation mechanism is not able to deconstruct these vibrations, then disease occurs (F. Morell, 1989). The development of pathological processes causes the change of this range of frequencies in the form of pathological (incongruous) vibrations. Pathological vibrations can be eliminated with the use of external electromagnetic vibrations.

A relative balance of electromagnetic vibrations is preserved in a healthy organism, which makes up the homeostasis, whereas in pathological divergences we observe a disturbance of this harmony of vibrations. Consequently, the restoration of these vibrations to the original range of frequencies will cause the organism’s rehabilitation as well.

Effect of pathological factors to the human organism

The organism and its functional systems are sources of extremely weak electromagnetic vibrations in a wide range of frequencies. When we talk about electromagnetic vibrations, it is as if we talk about the management level, since they are the ones that activate and control all the functions of the organism that are of vital importance. With the effect of pathogenic factors, new sources of electromagnetic vibrations that are not familiar to the organism are created. With the disturbance of the dynamic balance between normal and pathological vibrations, energy-informational blockage occurs, which instigates the activation of pathological responses to the creation of toxins. To this mechanism it is possible to perform a bio-energetic intervention.

How do these several toxins finally affect the organism and what happens with health condition? With the term toxins, we will mean any factor of offence: viruses, bacteria, microbes, heavy metals etc.

After invading the human organism in a dispersed way, the toxins are accumulated in their “area” and under the effect of the magnetic field of the Earth, they form a cluster.



Formation of clusters by dispersed toxins that invaded the organism

Since toxins are found under the impact of external and internal electromagnetic fields, they are arranged at a strictly defined order and they form poles like a magnet does. In these poles, electromagnetic fields of an incongruous nature are gathered that characterize the toxins. This epicentre affects the neighbouring meridian and causes the malfunction of organs and systems. By causing an incongruous intervention to a harmonic system, the cluster forces the organ to function not according to its own frequency. The organ, on its part, has high “positive predisposition” to react to weak electromagnetic vibrations.

The basic idea of applying resonance to diagnosis and to the EAV test according to R. Voll, lies in the fact that, with a proper choice of the frequency of the therapeutical effect, we are able, even with an insignificant point, either to strengthen the normal vibrations or to weaken the pathological vibrations in a biological system.

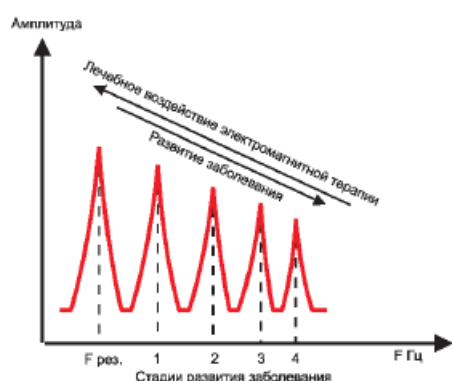


Diagram of change in the range of frequencies of electromagnetic vibrations as a pathogenic factor during the course of the disease.

In cases of a weakening (non-adjustment of the organism to factors of the external environment), even the slightest divergence from resonance frequency causes an abrupt decrease in the amplitude of the signal of the organ and consequently a decrease in the organ's energy. With the progression of time, the organ resists constantly less the action of the toxin and disease occurs.

The indications of the device that signify the pathology of an organ or a system rise to normal levels when the required (appropriate) pharmaceutical product is placed at the patient's hand. The therapy is conducted with the electromagnetic vibrations of the medication, with which the human organism, independent organs and systems come to resonance.

We may infer from the above diagram that the shift in the range of the frequencies takes place both to the side of high frequencies as well as that of the low frequencies. The divergence of the organ from the frequency of its function causes the disease.

The course of a pathological process moves through the following stages:

1. Function of a healthy organ. This is a situation in which no effect of the pathological factor has occurred. The organ functions well and respectively the function of the organ lies in normal levels.

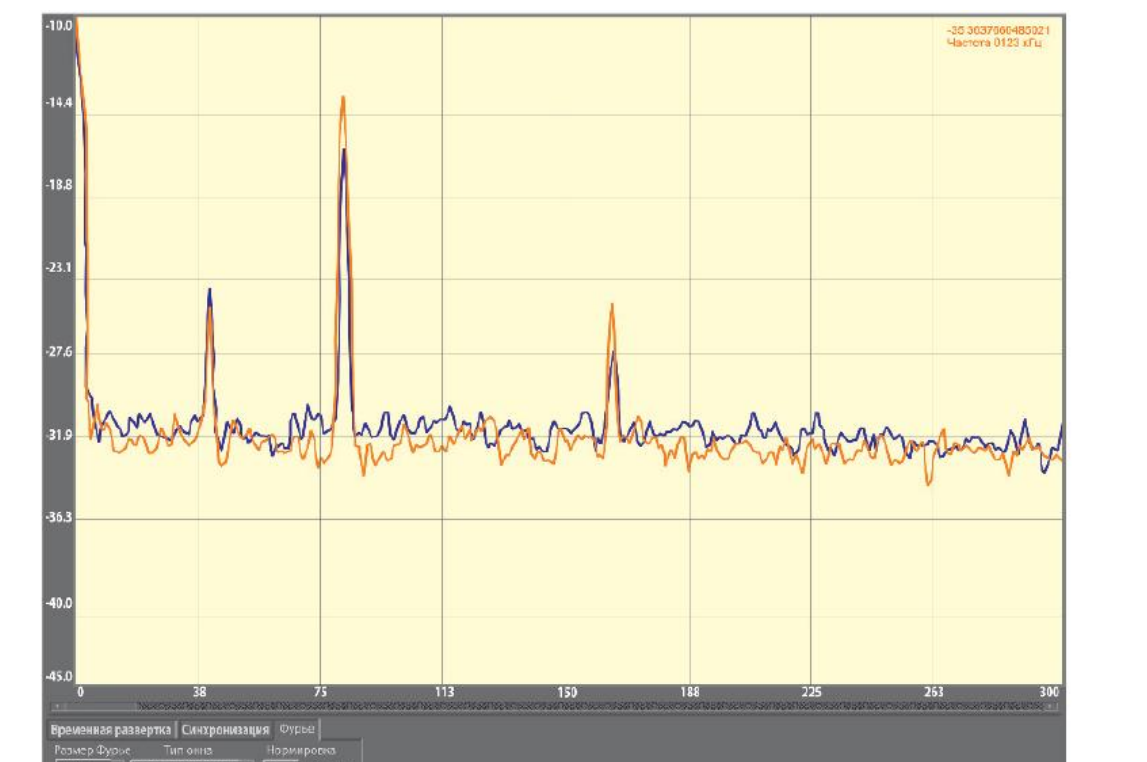
2. First stage - temporary discordance of different levels of function of the biosystem. The effect of the pathological factor is weak and does not cause fatigue to the organ. During this stage, the energy of the organ suffices to restore it to the normal function.

3. Second stage - disturbance of informational flows in the organism. The situation begins with the function of the organ in a phase of functioning intensity. In other words, the organ does function, but it does so weakly. During this stage, disorder in the required response of the organ to the effect of the external offensive factor occurs. This particular situation is characteristic for stress or the chronic fatigue syndrome. Autonomous recovery is possible, but with the active participation of the patient himself/herself.

4. Third stage - disorder in the metabolism of energy. At this stage, we have disorder in the energy circulation per meridian. The energy in the organ is insufficient for its normal function. Without external assistance, the organism

is already incapable to return to normal function. Therapeutical treatment is necessary for the recovery.

5. Fourth stage - disorder in the metabolism and destruction of structures. Here, we have a situation in which an organ is diseased. The organ malfunctions. The energy of the organ is few and it is not in a position to resist the disease. Chronic diseases occur here. With a further move of frequency, we have the deregulation of the organ and decease of the tissues. This is an extreme stage of the development of the disease. Quite often, at this level the restoration of the function of the organs and systems of the person is impossible. A further move of the frequency causes death.



In the diagram, the real move of the frequency of the organ in relation to resonance frequency is presented. The signal during the development of the disease is shown with the brightest colour. The organ has three resonance frequencies: 5,5Hz, 10,5Hz and 21 Hz. The bipolar cluster affected only the second and the third resonance frequency of the organ. It had no impact on the first resonance frequency. The second and third resonance frequency moved towards the side of the increase of frequency. Consequently, the frequency range of the pathological factor lies in the range from 10 Hz to 21 Hz and can include even higher frequencies. This means that the hormonal

components of the pathological cluster of the organism are found in the action zone of the second and the third resonance frequency of the organ.

Basic principles of endogenous bioresonance therapy.

In 1977, a new biophysical method was invented and established in Germany: MOPA-therapy, which was subsequently renamed into “bioresonance therapy” (BRT). This method belongs to the endogenous Bioresonance therapies.

Humans are wholly placed within an infinitely large and at the same time infinitely small system of electromagnetic vibrations; whereas they are themselves parts of this system as well. These are the vibrations of the Universe, the vibrations of our solar system, of large and small galaxies, vibrations coming from the thinnest layers of our organs and tissues, as well as from the subatomic sphere of protons and neutrons; slow vibrations that do not exceed 1Hz, but also fast vibrations rising to kilo-, mega- or even giga-Hz. And the human being has to live within this huge range; in a different case, it is clear that his/her survival is not possible. This is the reason that French professor Louis-Claude Vincent calls the electromagnetic vibrations “deus ex machine” of life’s nature, meaning life by its physical meaning.

With the aid of a simple experiment, we may represent the above formulation. Suppose we place an animal, a rabbit for instance, inside Faraday’s box, isolating it thus from external electromagnetic radiation, but securing all other preconditions for it to survive: food, water, light, sufficient space for it in order to move. The result will be the animal’s death in 3-6 weeks’ time. This fact leads us to suppose that an animal’s life is not possible without radiation sources, i.e. without electromagnetic vibrations.

Experiments like this exhibit the effect of external vibrations to the organism. External vibrations are necessary for the creation and preservation of life. Nonetheless, they also participate in the appearance of disease or in the creation of its causes, as we will show later.

However, the basic topic that we will examine is the vibrations that exist within a living organism, which, as we have already noted, depend on external vibrations only partially.

Pathological vibrations are always present in the organism. However, the disease appears only when the mechanism of self-regulation is deactivated, as we mentioned earlier. Therefore, we may define as disease a situation in which the pathological vibrations are long-term enough so as to cause the appearance of the disease or of a pathological reaction.

The idea to use self-vibrations of the patient himself/herself was an entirely new one. From research in the areas of Physics, Mechanics, electric fields and electronics, we know that we may suppress and make existing vibrations disappear if we use the reverse trend (of vibration) of equal length and frequency. We should pay attention to the following four parameters here: length, amplitude, height and time. In other words: the vibration and its opposite vibration have to have the same wave length; they have to have the same spatial features; they have to have their forces equal and to occur simultaneously.

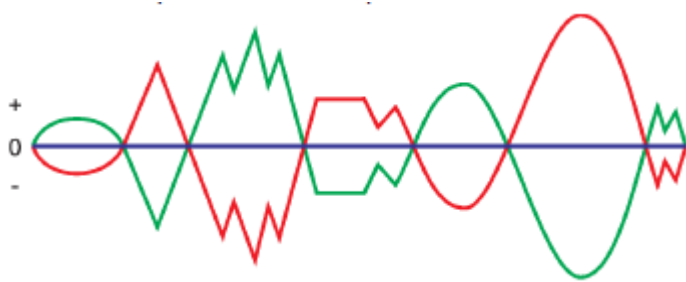


Diagram of activation of the inversion.

This form of process is the one that takes part when conducting Bioresonance therapy. The purpose of the method is to eradicate pathological electromagnetic vibrations that exist in the patient's organism and thus to achieve improvement of the situation, something that in turn provides the possibility of full recovery.

Bioresonance therapy releases the organism from factors that block the organism's energy. BRT is applied before any other therapy begins because not only does it create the most favourable initial condition (since after its execution the organism possesses more energy), but, aside from this, after BRT no other kind of therapy is quite often demanded.

By eradicating pathological vibrations, BRT removes all that stumbles, blocks, or damages, anything that serves as the cause of a disease, since

electromagnetic vibrations are first in the chain of the causes of disease and of biochemical changes.

Therapy with the aid of self-vibrations of the patient's organism fulfills totally the requirement to avoid any kind of coercion (in the organism), especially due to the fact that the effect (energy) that is applied as well as its sizes coincide fully with the respective ones (sizes) of the patient.

There is one more significant aspect that we have not mentioned up to this point and that makes the Bioresonance approach the most completed, trustworthy and effective: to eradicate a certain vibration, we have to direct it to the opposite vibration, i.e. that with an amplitude that is set exactly at a corner of 180° . If we examine a simple, random vibration, we will see that its amplitudes are found partially above and partially below the zero line.

In the figure presented below, such a vibration is represented in the form of a continuous line. This symbolizes the organism's vibrations. The opposite vibration is presented with the interrupted line. This is reversed vis-à-vis the original vibration by 180° . Both vibrations neutralize each other, something that in turn causes the eradication of pathological vibrations.



The above figure is an unacceptable simplification. In reality, vibrations are more complicated. They have a three-dimensional character, to which a fourth dimension, i.e. time, is also added. However, from a purely technical point of view, the above representation is adequate, as is Bioresonance therapy in general.

Inversion is the second basic principle of bioresonance therapy. The first one, as we have already stated, is **the use of the patient's own electromagnetic self-vibrations**.

Bioresonance therapy applies only at the level of physiology, in case we speak of energies used at it. This form of therapy does not use exogenous forms of energy, e.g. the energy of different forms of pharmaceutical products and radiations, but on the contrary it targets the eradication and removal of pathological forms of energy only.

Almost the entire spectrum of the organism's vibrations appears at the surface of hands or the soles of feet. This is why bioresonance therapy with two electrodes in hands or feet is quite effective and in many cases sufficient. This kind of therapy was named **basic therapy** and in our days all kinds of treatment usually begin with this one. Basic bioresonance therapy is conducted without the use of medication. This **non-specialized** therapy is effected with the use of hand and foot electrode (flat and cylindrical elastic electrodes). This therapy does not aim to a certain distinguished organ or tissue, neither to a certain function or meridian.

In **specialized therapy**, we should rank in the first place the various forms of therapy at the points of acupuncture, the therapy of wounds, therapy through excreta of the organism itself and therapy by allergens. The possibility of applying a series of ingredients of the organism that can be used in Bioresonance therapy includes: tears, hair, saliva, excretions of tonsils, vomit, sweat (of heads, shoulders, legs and torso), ear excreta, the blood of menstruation, sperm, content from injured points and burnings and excrement. All these have specialised vibrations and a particular way of effect and can be combined with basic therapy or with the aid of special electrodes at the point of the disease.

Indications

The total approach and the maximum individualization of therapy for each specific case enlarge the range of possibilities for the method to an unusual extent. Bioresonance therapy is the method selected in those cases when no

complete result is achieved through usual therapy. This happens, first of all, in chronic persistent diseases of the bronchopneumonic system, the gastrointestinal system, the Musculoskeletal system, aggressive pain syndromes, immunodeficiency, nutritional disorders, several functional disorders, pre- and post-surgery periods.

The greatest efficiency of the method is recorded when dealing with allergies, nutritional intolerance, acute and chronic toxic insults from elements of the environment. Dentists determine the toleration of a patient to several dentist materials with the aid of resonance therapy. With the aid of this method, we can achieve the eradication of the organism's toxic offence from amalgam. Moreover, we can determine the areas of the infections (for example dental) that affect the internal organs of patients. Bioresonance therapy can be very well combined, if necessary, with the use of medication and numerous other non-pharmaceutical methods.

Indications are similar as those of homeopathic therapy, of acupuncture and of biomedicine as a whole. First of all, chronic degenerating diseases, rheumatism, weakening of the immune system, allergies, pain feeling of all kinds (neuralgic, of rheumatism, pre- and post-surgery, pains from malignant tumours), persisting traumas, post-surgery therapy, asthma, bronchitis, gastritis, duodenitis, ulcer.

Therapeutical action can aim to any organ and system of organs. Some of the diseases where restoration is achieved: migraines, chronic and acute diseases of the lymphatic system, heart and cardiovascular diseases, pancreatitis, bladders of pancreas, uterus and ovary, diabetes of adults and children, cystitis, neuritis, scars. The greatest percentage of success for the method is recorded in the therapy of allergy, intolerance of certain food products, toxic offences caused by the elements of the environment, poisonings, acute and chronic inflammations, pre- and post-surgery therapies, sleep disorders, children's disposition to infections, psychosomatic diseases, diseases of the metabolism and numerous others. In essence, practically all human diseases are open to therapy with the aid of the Bioresonance device.

The effectiveness of the method is also certified through statistical data. Therefore, according to data of German physicians, rehabilitation of allergic diseases rose to 84% of the cases, improvement to 14% and lack of change or

deterioration to 2%. A small number of cases of failure in therapy are interpreted exclusively from imprecision in the correction during therapy.

Application limits of bioresonance therapy

Following all that has been described above, the impression that was created can be that we may cure any disease with this method. However, there are limitations that may render bioresonance therapy not wholly successful or only partially successful. This will become intelligible as soon as we keep in mind all the time that the domain of application of this method is the range of electromagnetic vibrations found within the patient's organism. It is from this point that the range of application emerges, including counter-indications.

In essence, we may say that successful results of the method can be expected in therapy of any situation in which electromagnetic vibrations or information have an essential role, irrespectively of whether this information is of a pathological nature or about health. This is an enormous field. There is no sector of medicine to which a patient's self-vibrations play no role at all. This is why we have to say that there are no limitations and suggestions of restrictions in the attempt of the application of bioresonance. There is always the possibility that, even in the most severe diseases or the most perilous situations for our lives, we may achieve an improvement of the situation with the aid of an eradication of pathological vibrations. And then, in terms of this improvement the required therapy can follow (for instance, surgery with a very smaller risk).

Nonetheless, there are situations that do not allow for the application of bioresonance therapy. Such situations could be:

- Anatomic causes,
- Toxicosis,
- Psychic causes,
- Deficiency situations in the organism,
- Absence in the patient's range of certain frequencies of vital importance.

Exogenous bioresonance therapy.

Exogenous bioresonance therapy relies on the impact of low intensity external electromagnetic vibrations of strictly determined forms and frequencies the cause the organism's response (resonance). Exogenous bioresonance therapy is more naturally applied through an effect of devices of electromagnetic therapy from distance (and not through contact). From a technical point of view, the peculiarity of the Deta devices lies in the method of the provision of resonance frequencies with the aid of current frequency, which also serves as a transparency-window for the organism, something that renders this method non-detrimental and free of danger in use, reducing counter-indications to a minimum.

Action of exogenous bioresonance therapy takes place in two axes.

- **The regulatory axis.** The so-called positive bioresonance therapy (carried out with “Deta -Ritm” devices).
- **The deregulatory axis.** In other words, the effect on the pathological site (carried out with “Deta -AP” devices).

Exogenous bioresonance therapy with “Deta -Ritm” devices.



Прибор «Deta-Ritm»

The inventor of the method of exogenous bioresonance therapy with organ-based frequencies is R. Voll. R. Voll was the first to discover that therapeutical effect through electric currents on acupuncture points depends not only from the amperage, but first and foremost from its frequency. It was proved that different frequencies - even of the slightest divergence - can cause different therapy results. The fundamental importance of this discovery became intelligible much later. Numerous researchers have been interested in the search of frequencies that are beneficial for the tissues, of the organic

structures of frequencies, as well as of frequencies for the determination of pathological processes. The greatest contribution was brought about by German scientists, such as R. Voll, F. Kramer, O. Klaus, O. Kollmer and especially Paul Schmidt, who created a very wide database of therapeutical frequencies by applying the so-called method of electrotherapy (immediate attribution of electrical current to the patient through electrodes).

However, Bioresonance method through contact is complicated and detrimental; this is why Bioresonance therapy was invented.

Nowadays, it is known by everyone that our planet has its own electromagnetic field (Schumann waves); it is also known that all living creatures are “regulated” at the low frequency range, which are the ones that define their biological clocks as well. This is why electromagnetic therapy with low frequencies is more natural for the organism.

Russian scientist S. P. Konopliev created the “Deta-Ritm” exogenous bioresonance therapy device, which creates pulses of an electromagnetic field at a low frequency range from 0.1 to 100Hz in a load bearing frequency of 10Hz. In this range are included the normal and regulatory frequencies, i.e. precisely those that were discovered by the outstanding German researchers. The device has the option of programming. To increase the efficiency of therapy or to use it for the therapy of severe diseases, the individual choice of therapeutical programs is necessary. Up to present, more than 1600 programs of therapy, comprised of frequency sets, have been created, each of which causes resonance to the required organs and systems.

Through the effect of the pulse electromagnetic field, biological resonance is caused to the organ. No energy enters the organism; this is created as a result of the natural phenomenon of resonance. The organ receives complementary energy for the combat against the disease. Precision of frequency is important for a good therapeutical result. The more precise the action frequency we select, the more energy required the organism receives. High therapeutical result in low intensity radiation is achieved in quartz frequency devices.

The duration of the effect of the electromagnetic field is of particular importance for the efficiency of therapy. Living organic systems have the

capacity to collect (and store) pathological information; this information is no other than electromagnetic vibrations.

Since information is accumulated, we are concerned with “latest arrivals”. The extent of the speed and intensity with which these additional “arrivals” move depends on the depth to which pathological information has sedimented. In this way, the accumulation of information is responsible for: a) whether the symptoms of the disease that we try to eradicate with the aid of electromagnetic therapy will recur, and b) how fast this will happen. On this also depends the total number of visits, as well the duration (intervals) between visits (in correspondence to second circle therapeutical treatment with pharmaceutical products that fit the patient).

For most children, only a few visits are enough, as well as in acute diseases. For elderly patients or cases of chronic diseases, on the contrary, the therapy lasts longer and is conducted more frequently. There are no general rules; a lot of things also depend from the extent to which disease has proceeded.

In acute cases of diseases, usually 1-3 visits are enough. 5 visits are necessary in rare cases.

In chronic diseases, 5-10 visits are required in most cases.

Exogenous bioresonance therapy with “Deta-AP” devices.

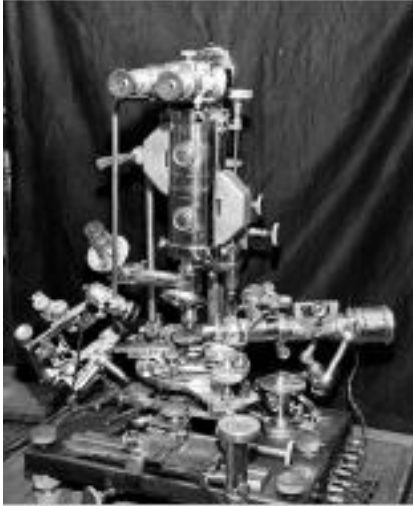
Antiparasitic exogenous therapy was invented by Royal Raymond Rife (1888-1971). He was one of the greatest 20th century scientific geniuses. Rife worked on the evolution of research technology of microscopic objects.

Royal Rife spent 66 whole years in the study and creation of medical tools for “Zeiss Optics” (US Government). His discoveries are used up to present in several areas of optics, electronics, biochemistry, ballistics and aircrafts.



Starting his research on the infrared microscope in 1920, he managed around the end of 1933 to create a device that allowed for the enlargement of microscopic objects by 60.000 times Rife was the first

person who actually saw with his own eyes a living virus! His microscope has given us the possibility not only to observe the viruses, but also to follow their activities during their lifetime. All these have given us the possibility not only to certify the



existence of viruses, but also to do research in the area of Microbiology.

Rife was based on the capacity of every molecule and living system to respond to every stimulating effect of vibrations. The abrupt increase in the amplitude of self-vibrations due to an external stimulation of a similar frequency is called resonance. The researcher observed how microorganisms invisible in white light suddenly became visible when the frequency of coloured light resonated with their own range of

radiation.

Subsequently, by increasing the amplitude of effective vibrations and by achieving the identification of self-frequencies with the frequency of the external stimulation, the scientist observed that the microorganism died. The phenomenon of resonance can destroy any structure.

By recording the self-frequencies of several pathogenous agents and by stimulating them up to resonance, R. Rife showed a safe track for combating dangerous microorganisms. The peculiarity of his method lies in the total lack of any danger whatsoever during effect to the cells of other living organisms, as well as to the cells of human.

The scientist recorded persistently the radiation range of each microorganism separately and in this way he created a very wide atlas for the frequencies of the microorganism that affect humans: herpes, polio, meningitis, flu et al.

In present-day Russia, a device of electromagnetic therapy is produced, which was invented by S. P. Konopliev and uses Rife's frequencies. «Deta -AP» device provides the possibility to conduct therapy in a wide circle of infections and diseases in general with the aid of software specially manufactured for this purpose. Each program aims to act on a particular cause of infection or at the changes in the organism that this cause has brought up. The application of a set

of programs allows to conduct efficiently and free-of-danger deep cleaning of organs and tissues from toxins, to restore the function of excretional systems, to strengthen the immune system, as well as to eradicate numerous infections in the organism. The medical devices have a very wide range of action thanks to their basic principle of action: the directed action of resonance frequencies. This enables us to cure effectively diseases that have been caused by any kind of irritation in any part of the organism and, in case they have been clustered, in all stages of the disease; and all these without causing injury to the organisation. The device has the option to form its software according to personal needs of each separate patient and for different nosological forms of the disease.

High therapeutical result is achieved due to the high penetrating ability of the electromagnetic field to the interior of the human organism. Great precision in the regulation of our frequencies enables us to act to a specifically targeted microorganism by killing only that one and without affecting the function of the organism as a whole.

Advantages of “Deta -AP” devices:

- Great efficiency of therapy,
- Therapy of a wide range of diseases,
- Selectiveness of action according to particular needs,
- Absence of counter-indications.



Прибор «Deta-AP»

Electromagnetic and photo -chromo-pulse therapy

The history of chromotherapy

Colour is a light without which it is impossible for us to exist.

We perceive colours principally through our vision, without realizing, however, that we absorb them through our skin, our muscles and even through our bones. Penetrating our organism, colour causes certain biochemical reactions at the tissues and it mobilizes important glands, including pituitary. This gland creates those hormones that regulate several functions of the organism: sleep, sexual stimulation, metabolism, appetite. By affecting our organism like this, colour can become our healer. Scientific therapy by colour is called *chromotherapy*.

Photo-- and chromotherapy are methods for the restoration of the health of the organism by which the elementary light particles (photons) affect processes taking place inside the organism: they perform transmission of information from the environment intracellularly inside the organism, as well as between tissues and organs; they strengthen energy dynamic; They improve the situation of the immune system; they regulate the functions of several organs, 20 of which depend on light (e.g. melatonin, a hormone of epiphysis that plays the role of the internal clock of the organism); they set and preserve the rhythm of daily vibrations of systems and organs; they activate the production of vitamin D, which is necessary for the deposition of calcium to bones.

Chromotherapy is known from quite ancient times. The people of the ancient civilizations of Egypt, India and China exploited the therapeutical properties of colours. Therapy with coloured light is as old as medicine itself. In Egypt, a temple was built in which therapy with coloured light was conducted. Heliopolis, the City of the Sun, was also renowned for its temples that cured people.

Ancient Greeks regarded light as a necessary precondition for bodily and psychic health and have bequeathed numerous texts related to the theory and practice of therapy with the assistance of the Sun. In ancient Rome, there was an extensive use of solar rays on a daily basis, to the point that the phrase “to satisfy my thirst by the rays of the Sun” was common. In their houses, Romans built separate supplements with flat roofs which they called solarium.

Chromotherapy as a science originates in the discoveries of British researchers Down and Bloyd (1877) concerning the therapeutical properties of

infrared rays (therapy of skin diseases and rachitis). A substantial boost in the evolution of the science was given by the work of the Americans Edwina Babbitt (*The Principles of Light and Color*) and Pleasanton, in which the therapeutical effect of each range of colour is analytically described. Hence, Babbitt suggested that the therapy of sterility be performed with the aid of red colour, neuronal disorders with light blue, whereas yellow should be used as a tranquilizing medium.

German physician Georg von Landgort discovered that red colour broadens vessels, whereas blue contrarily makes them more narrow (*Die Licht und Farbgesetze und ihre therapeutische Anwendung*, 1894).

Austrian philosopher Rudolf Steiner, a mysticist and pedagogue, used light in his spiritual teachings. He founded anthroposophy, the science for man's spiritual receptivity and the development within human of awareness and acceptance in relation to the Universe. Based on the teachings of anthroposophy, different Schools were created.

Chromotherapy is based on the fact that each one of the biologically active zones of the organism responds immediately to a certain specific colour (coloured light) and the effect of a specific colour on the organism liberates from the energy block that is the cause of the disease or of some functional disorder.

Contemporary scientists believe that chromotherapy is one of the most promising therapeutical methods; it is reliable and totally free-of-danger (with a proper application, it will never deteriorate a person's health).

From the moment a human person is born, his/her nerve cells have a healthy vibration with a specific wave length. In several pathological circumstances, these vibrations change. With chromotherapy and according to resonance principle, a necessary healthy vibration occurs in the cell (the cell is capable by its nature to absorb and accumulate the colours it needs, on the one hand, and, on the other hand, to discard those abundant). This is the mechanism of the action of coloured light as well.

Chromotherapy is an effective method of intervention through coloured light with the purpose of restoring the normal function of the organism. The therapeutical action of chromatic light has to do with the effect of electromagnetic waves of specified lengths to our organs and, in fact, the

action of different colours affects the different diseases in special ways. This therapy has important efficiency. With a proper use, colour-light has absolutely positive results.

Visible and invisible light

The word quantum (quant) means particle in Latin.

In contemporary medicine, with the term “quantum therapy” we mean the form of physiotherapeutic effect to the organism through quanta (particles) of low intensity artificial light.

Light consists in electromagnetic vibrations with properties of particles (quanta, photons) and waves; in other words, it is a very special form of transferring matter which is comprised by infinitely small particles. The transfer of light means that either a body emits it (it radiates), or a body receives it (it absorbs it). The atoms of all elements interact with the transferring particles, i.e. quanta, either by radiating or by absorbing the light. The character of this interaction depends, in principle, on the form (category) of radiation, i.e. with the different nuances of sunlight that Physicists have called wave lengths. Among all natural phenomena associated with light transmission, the brightest ones are their wave characteristics (interference, scattering, diffraction, reflection, refraction). In the phenomena in which we have radiation and absorbing of light from the tissues, the quantum properties (of light) make their appearance. Between the quantum energy and wave length there is an inversed relation: the shorter the wave length of the light, the largest the energy of its quanta, and vice versa.

The basic factor for the action of light is the signals of artificial electromagnetic single-colour uncombined or multi-colour radiation within the range of visible light. These signals are characterized from:

- The rhythm of their transmission (stable, rhythmic, arrhythmic),
- Their colour (chromatic or achromatic),
- The level of brightness of the (bright) field,
- Their formation (changes in their forms),
- The allocation of brightness of the brightfield.

The basic peculiarity of the method lies in the target intervention by doses (of light) of low intensity. Due to the fact that in all biological systems of a living organism in several diseases the physical-chemical and biochemical processes are conducted in the lowest energy levels, to restore them to normal levels a small dose of additional energy (from the received natural factor) is required.

Through the impact of low intensity radiation, cellular membranes and the endocrinal products are changed, something that has as its consequence the increase in the circulation of elements through the membrane and the strengthening of the basic bioenergy functions.

Photo-genic photo-therapy (photo-genic therapy, biodynamic therapy)

Research has shown that in the area of therapeutical action with radiation force density less than $2,5\text{kW}/\text{cm}^2$, in a transition of a laser beam through a living tissue of 200-500 μm , the consistency of the radiation does not matter. The basic parameter is the radiation wave length. This is exactly the reason that the photodiodes of red (wave length of $660+15\text{ nm}$), blue (wave length of 470 nm) and infrared (wave length of $840-950\text{nm}$) radiation for therapeutical reasons were discovered.

The devices and the methodology of application underscore the technological prevalence of this therapeutical trend:

- Substantial decrease in received pharmaceutical products, even ceasing of them,
- Decrease in the rehabilitation period by 2-3 times,
- High defense dynamic by the organism,
- Lack of side-effects, non-aggressive and ecologically safe therapy

Experience in patient therapy shows very good results when complex application of these methods takes place. Effectiveness is increased when the biologically reverse relation is used, in other words, when we use diagnostic devices.



Прибор «Delta-8»
с приставкой «Quantum»

The consequences of chromotherapy:

- Activation of the composition of protein.
- Increase in and activation of enzymes.
- Increase in ATP production.
- Improvement in the microcirculation of the ingredients and functions of blood.
- Revitalization of tissues.
- Increase in the production of collagen.
- Anti-inflammatory action.
- Protection from edemata.
- Pain-relieving action.
- Decrease in cholesterol.
- Mobilisation of the immune system.
- Powerful anti-oxidation.
- Normalization and increase in prostaglandin.
- Reduction in the level of fatty peroxidation.

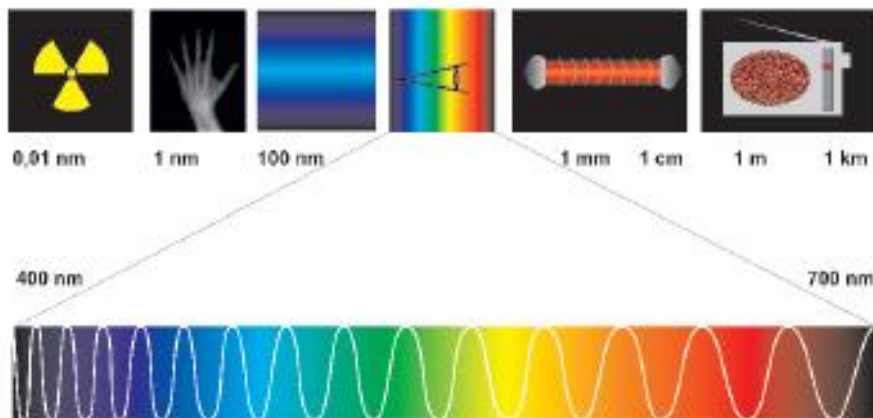
Parameters of quantum operator	Characteristics
Wave length of infrared emission (nm)	880
Wave length of red emission (nm)	660
Wave length of yellow emission (nm)	590
Wave length of blue emission (nm)	468
Wave length of green emission (nm)	525
Light power of infrared receiver (mcd)	100
Light power of red receiver (mcd)	200
Light power of yellow receiver (mcd)	1200
Light power of blue receiver (mcd)	2000

Light power of green receiver (mcd)	2400
Radiation surface (cm ²)	16

Spectrum

The colours that are visible to the human eye are in reality a small part of the electromagnetic spectrum, which has the infrared colour on its one edge and the ultraviolet colour on the other one, which we see.

Traditionally, when we talk about spectrum colours, we refer to the 7 colours of the rainbow. However, in our case we examine the colours of the complete chromatic circle, along with the achromatic ones.



How many colours are there in nature? The number of colours emitted by different bodies, cultivations, etc. can vary from a few units to several hundreds. According to research data, the human eye under normal circumstances can distinguish from 20,000 to 200,000 different nuances. On the other hand though, our language, our conceptual system, is not able to provide a great number of definitions.....words are not enough. In addition, some of the basic colours do not bear their conceptually original meaning, but their associative one: red (from *Sanskrit rudhira*: blood), yellow (from Old English *geolu*: oblique case), orange (from the word *orange*), ochre (from *ochre*) etc. Other colours do not even have names of their own, but only carry an associative characterization (*tan*, *fuchsia*), or have a descriptive naming (*deep green*, *white-yellow*) etc. Hence, from the moment we cannot give names to the numerous nuances, we cannot perceive them as well. This means that all these information concerning the massive volume of the variety of colours,

remain in our subconscious without being used. Colours can be **achromatic** or **chromatic**. The human eye is able to distinguish up to 300 shades of the “achromatic” spectrum and tens of thousands of the “chromatic”.



Цветовой круг

By definition, we classify black, white and the infinite variations of grey in the achromatic colours. If we put a white piece of paper in the light, another one at a shadow and a third one at a deep shadow, we will observe that the white piece that is found at the shadow looks more grey than the one put in the light, whereas the one put at the very shadowed place is looks black. In case the same experiment is performed with a coloured piece of paper, we will see that the paper retains its colour. This is explained by the fact that white, black and grey differ in each other only in terms of brightness: some are brighter ad some are less bright (colourless).

The chromatic colours are all the colours of the spectrum. Three of them are the basic colours (red, yellow and blue), whereas the others are secondary (orange, green, purple).

Out of the three basic colours (red, yellow and blue) and the two “achromatic” colours (black and white) the other new colours are created. All colours found in nature, even the more complex ones, are a mixture of four colours: the two neighbouring ones in the spectrum, black and white. We note that when we say “mixture” we do not mean mechanical mixture (like a painter mixes the colours) but optical mixture, i.e. to put it in more precise terms for that which takes place in our eye.

Each colour of the spectrum has its own meaning and affects the human organism in its own way. Consequently, totally determined colours are used for the therapy of particular diseases or the elimination of pathological psychic-emotional situations.

RED



Meaning and symbolism:

- fire,
- life,
- action,
- fight,
- aggression,
- heat,
- energy,
- will,
- passion,
- passion

Red colour (in contrast to green) is more emotional and active.

Organ with which it is associated: blood, genitals.

Psychology and light: It fills a person with the feeling of security and confidence for the next step, it helps in coping with hardships. It forms the leader. Red colour is preferred by those who need stimulation, strive for success and those that do not seek for self-confirmation all the time. The choice of the red colour by someone signifies the tendency for a consummate life, leader characteristics, intense creativity, aesthetic views, it certifies that this person can both fall in love passionately and be bossy. Radiation with red colour for a great period of time may cause worrying, anger, nervousness, as well as even aggression. In our everyday life, it is usually used for the signification of danger. Red colour directs our attention towards the external environment. It invokes stimulation and worry and it increases nervousness.

The stimulation that is caused through red light is normal and sexual and this is why it is a very popular colour. We have to note that red clothes stimulate the physical-bodily and not the spiritual attraction to the person that wears them. These clothes stimulate sexually and in case no sexual intercourse is possible, they cause irritation.

Red neutralizes the following negative psychic situations: apathy, depression, fear, uncertainty.

Physiology and colour: It activates the nerve system, releases adrenaline, it improves blood circulation, it increases red blood cells, it increases sexual attraction and sexuality. It revitalizes, it stimulates and it creates warm atmosphere. When it tends to pink, it ascribes femininity; when it deepens (deep red), it ascribes manliness; yellow-red signifies joy, red with blue nuance signifies enigmatic characters. In large quantities, it causes fatigue and eye irritation.

Cures: low arterial pressure, anemia, circulatory system, colds, sniffle. It provides a boost to the organization as a whole and it activates the function of external organs.

Is not indicative: for high pressure, bleeding, stress situations. It does not apply to aggressive and irritable characters.

The use of red light should better be combined with green or blue. At the end of red light therapies, these “cold” colours should also be used.

YELLOW



Meaning and symbolism:

- sun,
- day,

- freedom,
- fun,
- persistence,
- worrying,
- celebration,
- patience,
- critical attitude,
- betrayal

Organ with which it is associated: abdomen (intestine, liver and gall bladder).

Psychology and light: It converts feelings into motion, it releases from negative feelings, it assists us to accept new ideas more easily and to listen to different points of view. It helps in the improvement of self-organization and the focus on our thoughts. For children: it stimulates interest in study. It can be used in children's bedrooms, but only up to a certain extent because in a different case children will not be able to sleep well.

If you want your guests to feel comfortably and happy, decorate your living room with yellow objects.

It helps in negative psychological situations: creative dead-end, depression, reduced self-esteem, pessimism.

Physiology and colour: It restores and cures the digestive system. It affects mainly the gall bladder, which plays a substantial role in the absorption and digestion of fats. It improves memory.

Cures: constipation, diabetes, skin diseases, nerve system weakening.

Is not indicative: for severe gastric diseases, insomnia.

Yellow colour (in contrast to bright purple) acts as a stimulator; it creates the sense of looseness and of variability, especially when there is no planning and diligence. It is associated with light, joy, hope. Golden nuances give the impression wealth and plentitude; they cause and preserve cheerfulness. People who choose it are usually sociable and polite. In India, yellow colour is holy. In the West, yellow colour is associated with unfaithfulness, jealousy and disease. The people who live full of hopes and dreams prefer yellow, whereas

those who are rather disappointed from life reject it. For instance (G.L. Ompuchov, 1997), yellow colour causes both positive (sunlight, gold, honey, amber) and negative (bile, urine, pus) connotations.

The psychological aspect of yellow colour corresponds to a state of irresponsibility, brainlessness, carelessness; it is the colour of implausible formulations without argument (“yellow press”). In Liuser’s test, according to the shape of interpretations, yellow colour symbolizes the will for release and the hope of happiness, the tendency to something new, the contemporary, and the future. In case yellow colour is the last one to be chosen, this means that the person is disappointed; that he/she lives in void and isolation.

In 36% of cases yellow colour was associated with impression and practically did not refer to sadness to sadness or fatigue.

Yellow colour is soft and bright; This is why it predisposed persons to the outer world, it created the will for socializing, communication and action, it contributes to the clear and logical formulation of personal thoughts (it is not a coincidence that ancient roman orators wore jewellery made of citrine (the yellow gem). This colour creates the sense of joy, happiness, fun, looseness, availability, and celebration; it reduces tension in interpersonal relations. However, in great doses, it can cause fatigue.

GREEN



Meaning and symbolism:

- nature,
- faith,
- outwardness,
- life,
- harmony,
- naturalness,

colour of expectation and rebirth, whereas in Islam it is the colour of the strict and rigorous prophet.

Green colour is conceived as fresh and wet. It is Nature's pain-relieving colour. It increases the acuity of vision and attention (it is not a coincidence that in libraries lamps have a green lampshade. This colour stimulates the organism as a whole; it relaxes; it rests and has a slight pain-relieving and hypnotic action. The mood to work is increased at a minimal rate, but this increase has a long duration. It is the serenest and most balanced of all colours: it invites you nowhere; neither does it demand anything from you.

DEEP BLUE (indigo)



Meaning and symbolism:

- peace,
- vision,
- quiet,
- suppression,
- idealism,
- depth,
- wisdom,
- serenity,
- worrying,
- fanaticism

Organ with which it is associated: pituitary, “the third eye”.

Psychology and light: It develops psychic skills. It clarifies one's thoughts; it releases oneself from worries and phobias; it allows for the inner voice to be heard and to get the right decision (intuition). With the aid of indigo, it is easier to move the thinner levels of consciousness.

It helps in negative psychic states: obsessions, paranoia, hysteria.

Physiology and colour: It cures deafening, cataract, bleeding, insomnias. It is anesthesiac; it helps with angina pectoris, rheumatism.

Is not indicative: for persons with a tendency to minor depression.

Warning! The use of this colour has to be quite cautioned due to its capacity to affect the endocrinal system (production of hormones).

Blue colour (in contrast to orange) causes associations of with the colours of the night sky, something that strengthens the inhibiting mechanisms of the organism; furthermore, it causes quite intense drowsiness. Blue colour is also associated with water, serenity, cleanness and infinity. It is natural that those who opt for blue colour aim at satisfaction and serenity. Individuals found in hyper-stimulation (of any cause) select deep blue nuances in almost mechanical and subconscious way. In internal spaces where blue prevails, a human's biorhythms are decelerated, the temperature of the body decreases as is also the case with arterial pressure. Blue colour is rejected by persons who do not possess psychic peacefulness and satisfaction. Blue and light blue reduce appetite, whereas effect of long duration may cause worries that are transformed into fear. According to research results (E.F. Bazin, A.M. Etkid, 1985), 25% of choices of blue colour had to do with concepts related to sorrow, but another 25% was associated with situations of manifestation of interest (into something), and no more than 4%, with joy, anger, surprise et al.

Blue is a colour of sincerity, justice, peacefulness, kindness and serenity. It is the colour of self-reflection and self-knowledge; it has a hypnotic and charming effect: who does not love staring at the sky or sea? In a long-duration effect, it causes inhibitory action to the nerve system that reaches up to pressure, suppression, feeling of sorrow and fatigue.

Questions for the assessment of the level of knowledge of physicians that have studied the seminar-by-correspondence on Vega-test-electroacupuncture diagnosis and exogenous and endogenous bioresonance therapy (for physicians of all expertise).

1. The concept of Energy-Informational Medicine.
2. The role of electromagnetic vibrations in the organism's function.
3. Homeopathy, potentionings of products and their correspondence in the activity of the pathological mechanism.
4. Nosodes, dilutions of nosodes and their correspondence in the activity of the pathological mechanism.
5. Organ-specific products, dilutions of organ-specific products and their correspondence in the activity of the pathological mechanism.
6. Göring's law - the course of rehabilitation.
7. Reckeweg's homotoxicology. The role of mesenchyme in homotoxicosis.
8. Table of homotoxic reactions for each phase.
9. Result of the medication appropriation test.
10. The method of the Vega-test according to H. Simmel as a result of combination and evolution of the electroacupuncture diagnostic method according to Voll and of the bioelectronic diagnosis according to Schmidt and Will.
11. Bionatural principles of the Vega -test and of bioresonance therapy.
12. Particularities and potentials for the application of the Vega -test.
13. The essence of the Vega -test.
14. Preconditions for conducting the Vega -test.
15. Bioresonance therapy, exogenous and endogenous. Basic principles and differences.
16. Indications for the application of BRT. Limits of the application of BRT.
17. Endogenous BRT. The principle of the inversion of pathological vibrations.
18. Exogenous BRT with "Deta-Ritm" devices.
19. Exogenous BRT with "Deta-AP" devices.
20. Electromagnetic and photo -chromo-pulse therapy.
21. Basic active factor during the effect of light-colours.

